

Mill Creek Fish Passage Improvements

Joe Pecharich and Bob Pagliuco
NOAA Restoration Center



Barrier #1 – Modified waterfall and “sacrete” passageway



Modified waterfall – boulder placed
created an ~6-7 foot jump
with only 2-3 feet of depth



“Sacrete”
filled passageway
10-4-2012

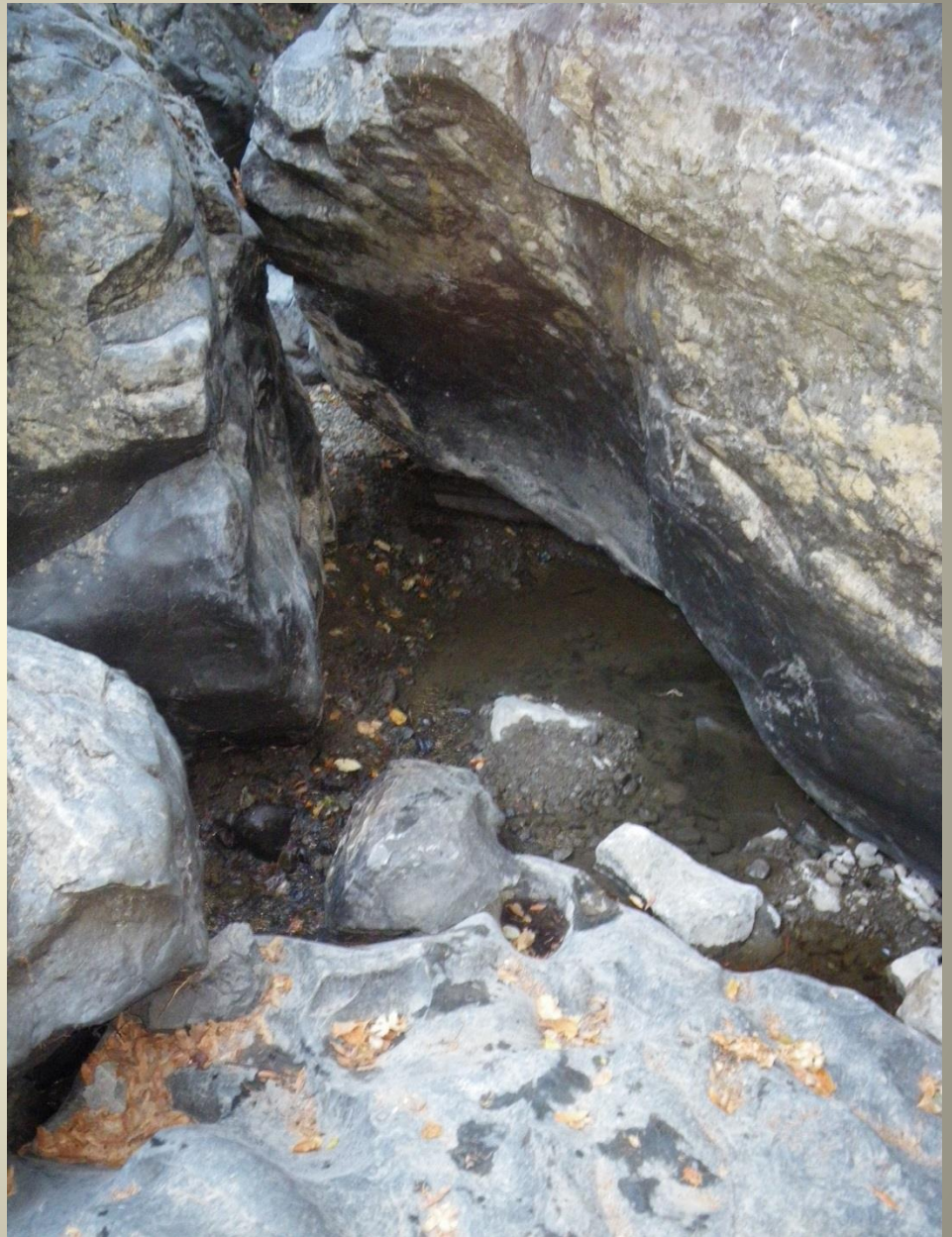


Once landownership
changed.....

3 people,
1 pry bar,
2 sledgehammers,
6-7 hours.....



Cleared
passageway
12-20-2012



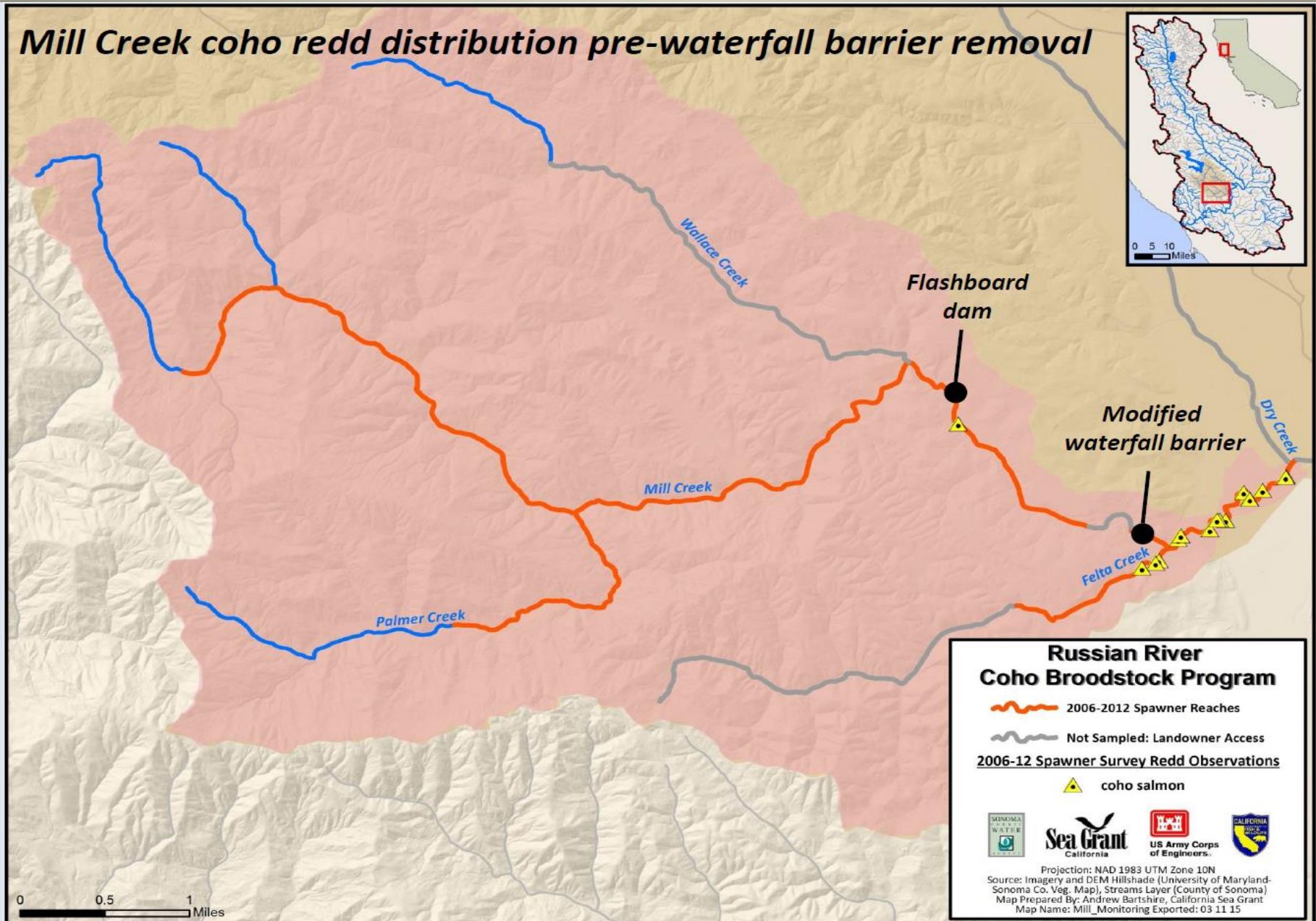
Waterfall area with “passage flows” - before



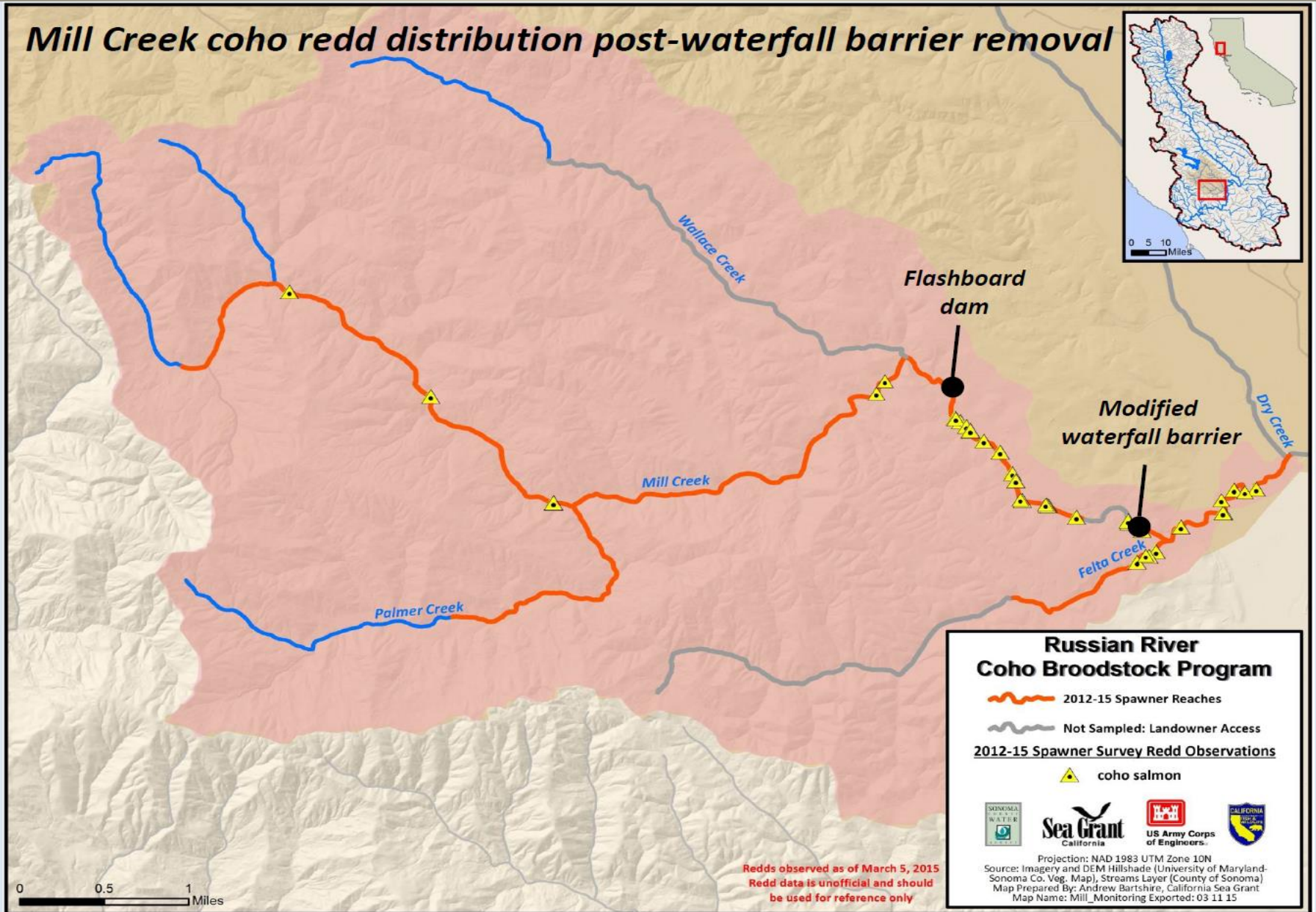
Waterfall area with “passage flows” - after



Monitoring Results – before removal



Monitoring Results – after removal

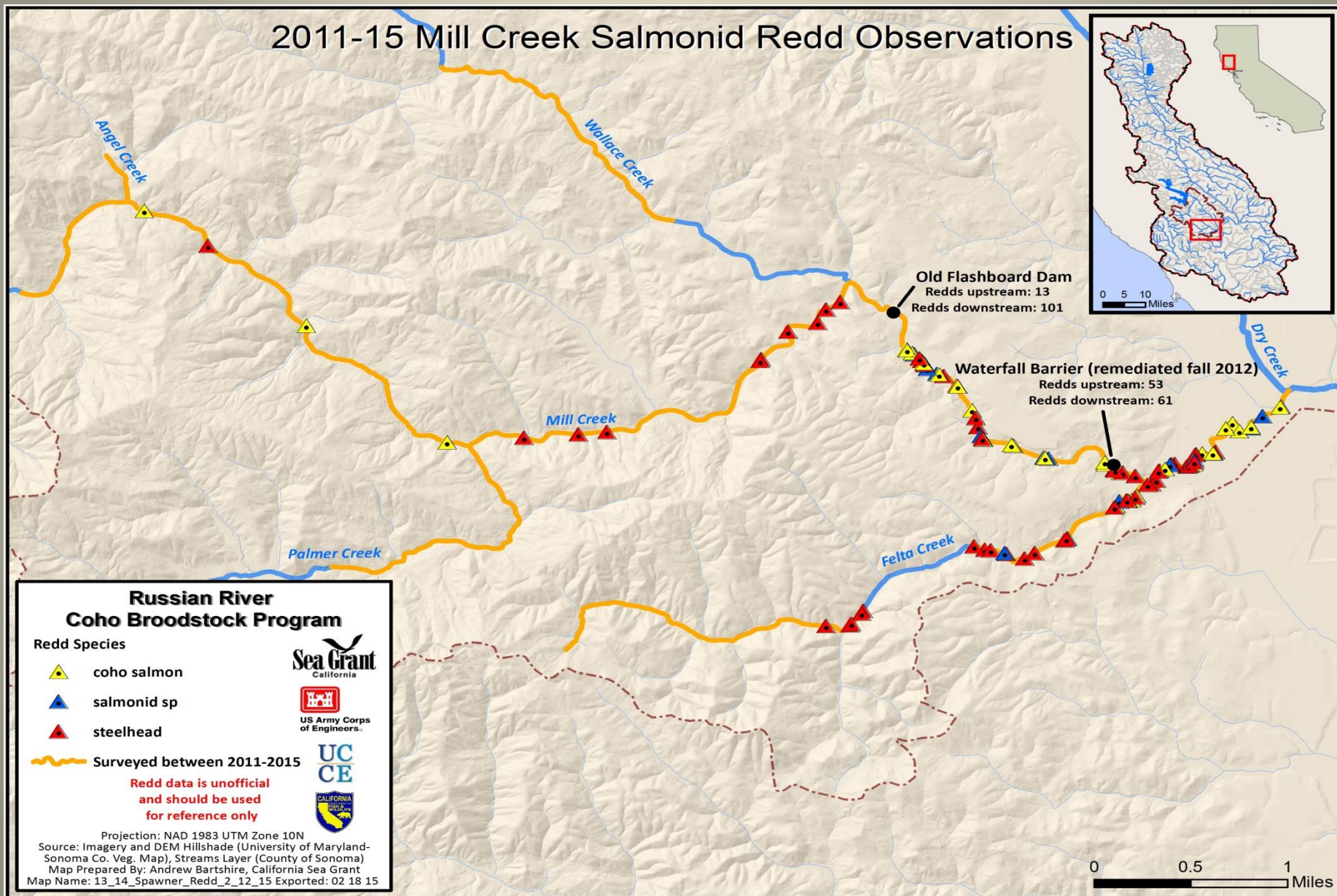


Barrier #2 – Large Flashboard Dam w/ Sill

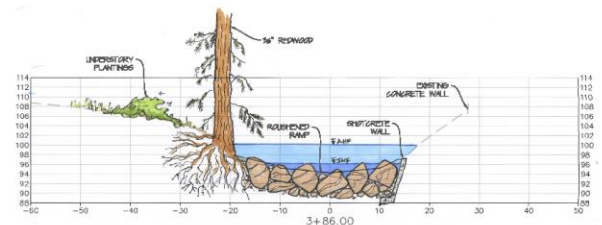
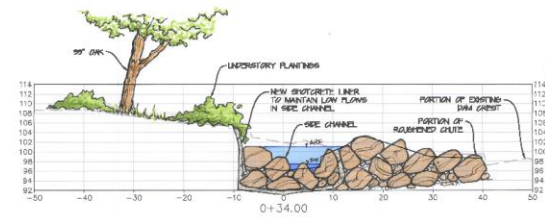
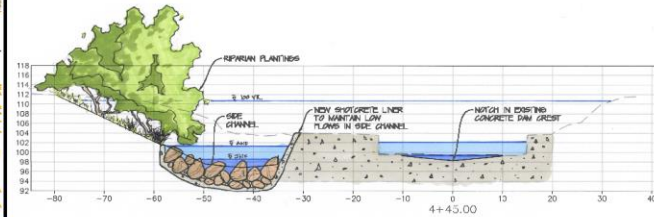
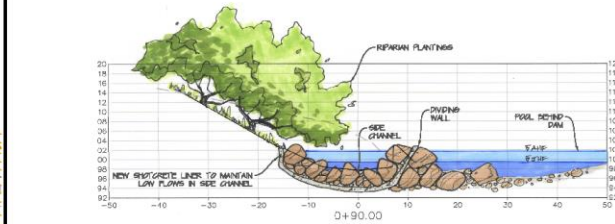
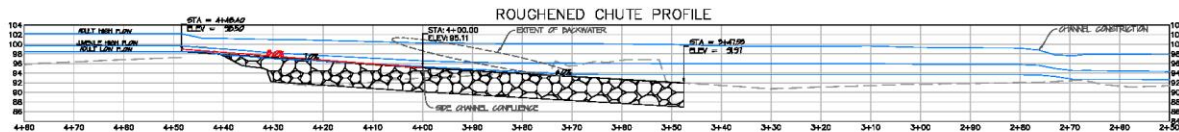
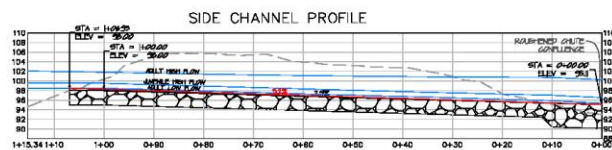
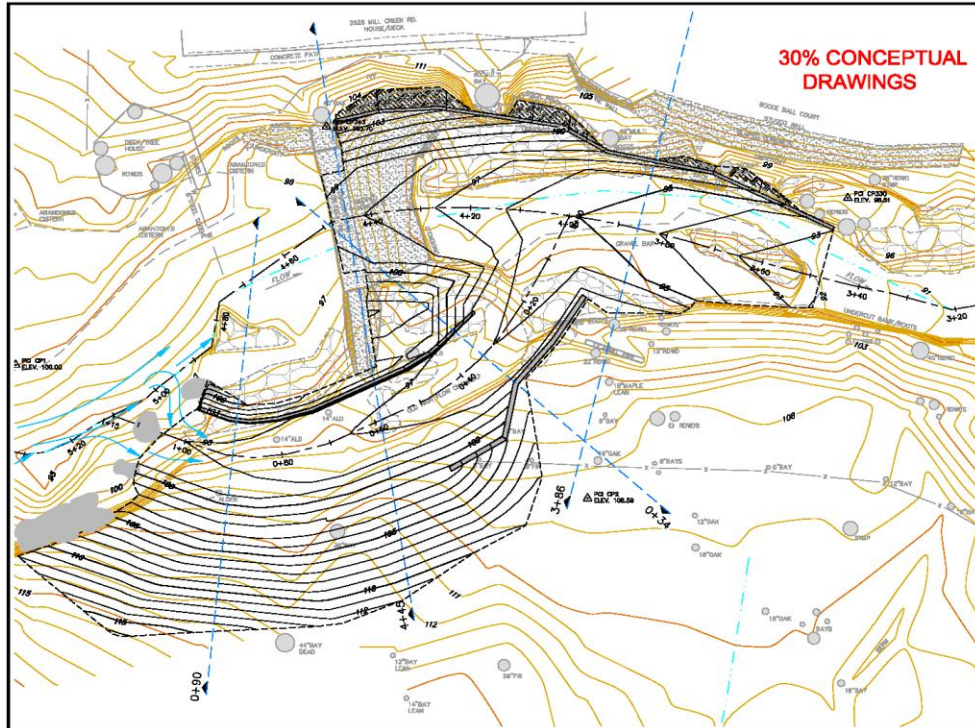
blocks ~ 90% passage to 11.3 miles of habitat
(~62% of the watershed) for coho and steelhead



Spawner Surveys 2011-2015



Preferred Alternative – Alt. E



PREPARED FOR:
**TROUT UNLIMITED
AND
NOAA RESTORATION CENTER**

DATE	BY	REVISIONS
8/24/14		
SCALE: 1"=10'		
DESIGNED BY: LW, MLH		
DRAWN BY: MLH		
CHECKED BY: MLH		

**MILL CREEK DAM
FISH PASSAGE PROJECT
ALTERNATIVE E - FISHWAY**

**SHEET
1
OF 1**

Preferred Alternative – Alt. E

- 3% roughened chute side-channel providing passage for all adults and most juveniles
- Will be the new low flow channel
- Dam will be cut down 12- 18 inches to water side-channel
- Extremely complicated area – landowners, house above the creek, 4 water diversions above (also being worked on!), natural creek constriction, etc.

Where we are at and next steps

- NOAA Restoration Center is looking at how much funding to contribute after funding designs
- Trout Unlimited and Prunuske-Chatham, Inc. to submit to FRGP and others...
- If funding comes through - 2016 removal??
- This has been an 8 year effort – Thanks to Derek Acomb, Lauren Hammack, Mary Ann King and Mariska Obedzinski and many others!