



**H.T. HARVEY & ASSOCIATES**

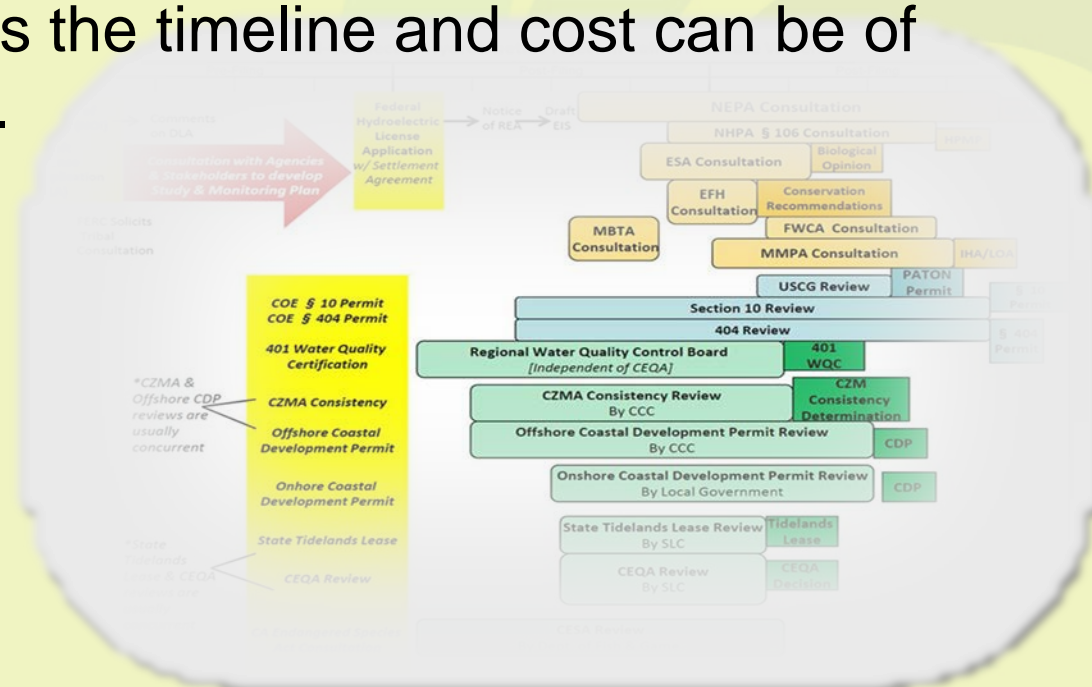
---

Ecological Consultants

**CALIFORNIA FISH PASSAGE FORUM**

**17 September 2014**

- Can be very onerous and must be conducted before project can start
- Roadmap for permitting depends on many factors
  - Project proponent (FERC, State Agency, Private landowner)
  - how the project is funded (Federal, State, private funds)
- Permit phasing/tiering should be planned out as part of your project as the timeline and cost can be of consequence.



- Environmental analysis of project and project alternatives
  - Support/requirement for other permitting processes





- Federal
  - USACE 404/10 [dredge/fill discharge/Rivers & Harbors Act]
    - Consultations with NMFS, USFWS, SHPO [ESA, EFH]
- State
  - RWQCB 401 [water quality]
  - CDFG 1600 Streambed Alteration Agreement
  - CDFG 2081 Incidental Take Permit and/or Consistency Determination
  - California Coastal Commission CDP
  - State Lands Commission
  - Caltrans Encroachment Permit
- County
  - Humboldt County CDP
  - Humboldt County Grading and Encroachment Permits

# Riverside Ranch: listed plants/animals



H.T. HARVEY & ASSOCIATES

Ecological Consultants

Species	Status Listing
Tidewater Goby ( <i>Eucyclogobius newberryi</i> )	Endangered (Federal)
Longfin Smelt ( <i>Spirinchus thaleichthys</i> )	Threatened (State)
Coho salmon ( <i>Onchorhynchus kisutch</i> )	Threatened (State/Federal)
Northern Red-Legged Frog ( <i>Rana aurora</i> )	California SSC
Lyngbye's sedge ( <i>Carex lyngbyei</i> )	CNPS
Humboldt Bay Owl's Clover ( <i>Castilleja ambigua</i> ssp. <i>Humboldtiensis</i> )	California SSC, CNPS
Eelgrass ( <i>Zostera marina</i> )	Essential Fish Habitat
Yellow Warbler ( <i>Dendroica petechia</i> )	California SSC
Black-capped Chickadee ( <i>Poecile atricapillus</i> )	California SSC
Vaux's Swift ( <i>Chaetura vauxi</i> )	California SSC
White-tailed Kite ( <i>Elanus leucurus</i> )	California Fully Protected
Northern Harrier ( <i>Circus cyaneus</i> )	California SSC
Red-tailed Hawk ( <i>Buteo jamaicensis</i> )	California Fully Protected
Willow Fly-Catcher ( <i>Empidonax traillii</i> )	Endangered (State)



# Riverside Ranch/Salt River restoration



H.T. HARVEY & ASSOCIATES

Ecological Consultants

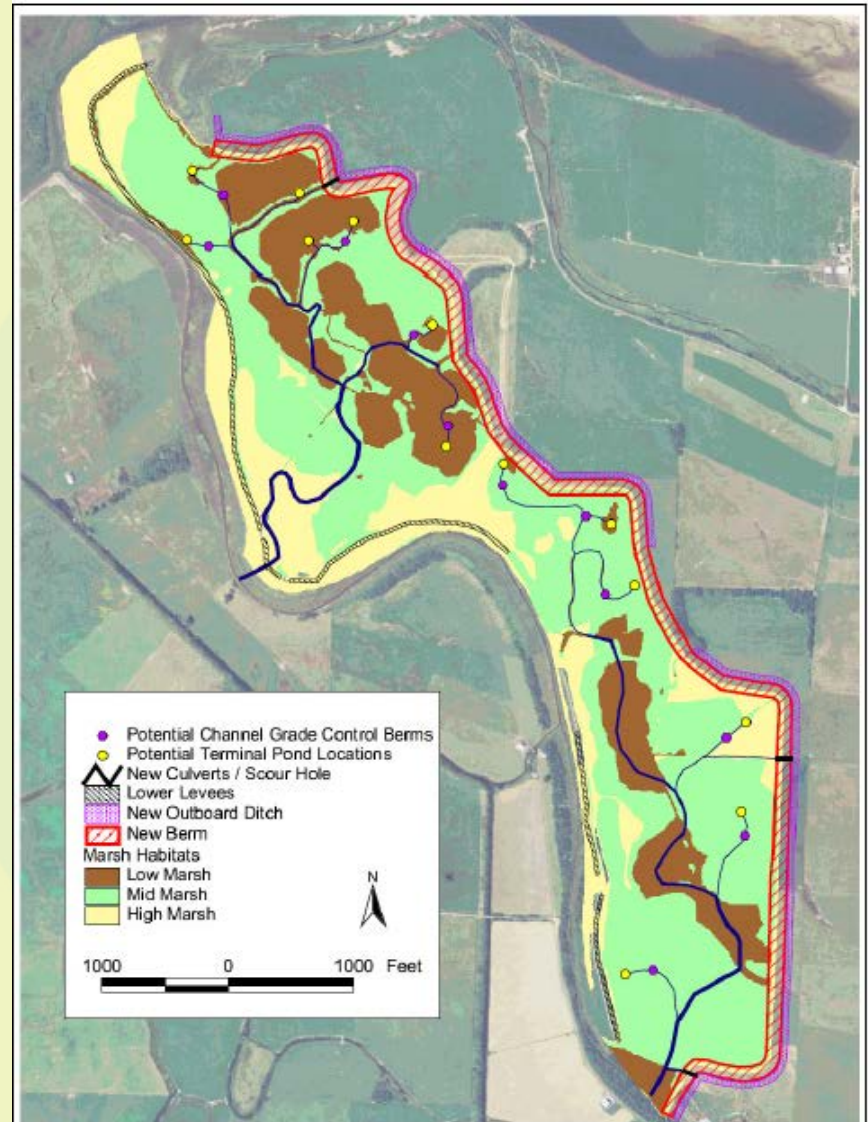


# Riverside Ranch restoration



H.T. HARVEY & ASSOCIATES

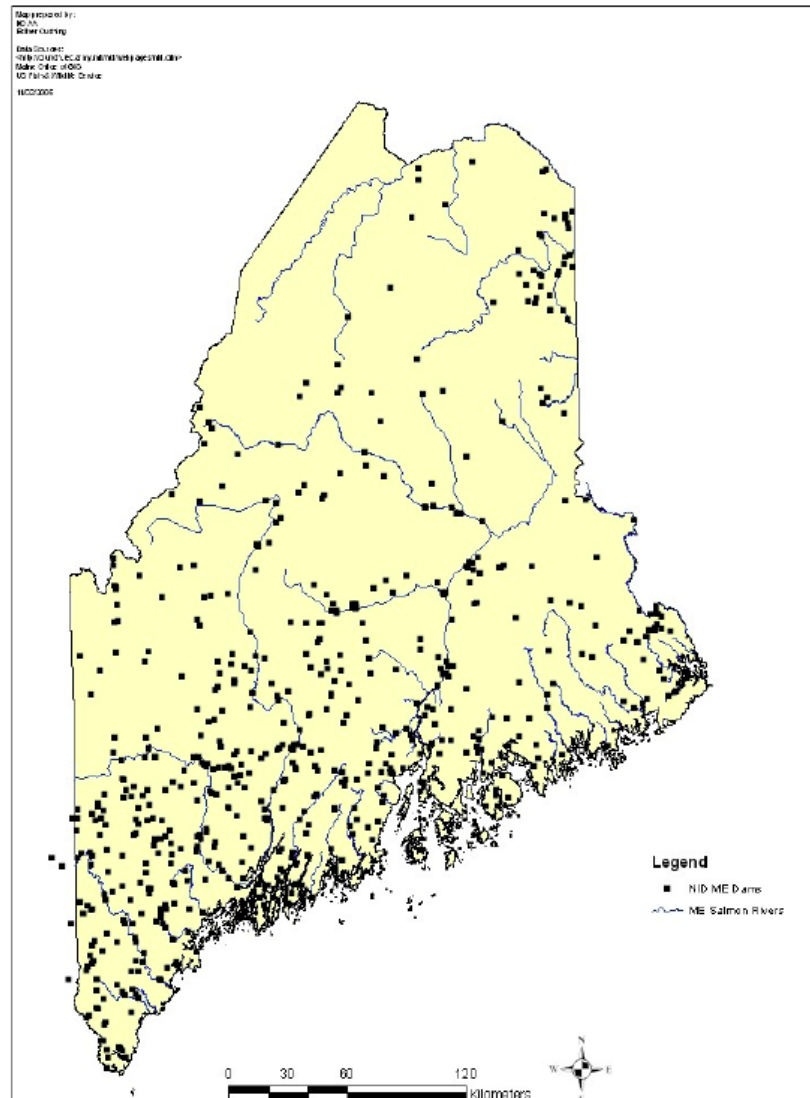
Ecological Consultants



## 782 dams in Maine

### 462 dams account for:

- 414,000 inaccessible habitat units
- 212,000 impaired access units
- 87,000 fully accessible units



NOAA Fisheries Service 2011. Building partnerships through a General Conservation Plan. 18 August 2011.  
[http://www.nero.noaa.gov/prot\\_res/altsalmon/conservationplan/getinvolved/GeneralPresentationPublicOutreachMeetings.pdf](http://www.nero.noaa.gov/prot_res/altsalmon/conservationplan/getinvolved/GeneralPresentationPublicOutreachMeetings.pdf)

- Programmatic ESA permitting on private lands via General Conservation Plan
  - <http://www.greateratlantic.fisheries.noaa.gov/protected/altsalmon/conservation/>

