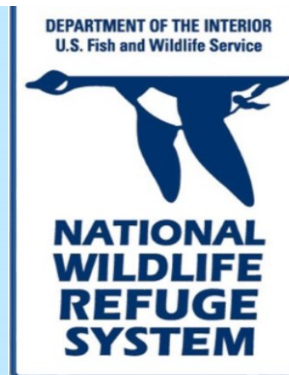




**Restoration Activities
On
San Pablo Bay
National Wildlife Refuge**

San Francisco Bay National Wildlife Refuge Complex



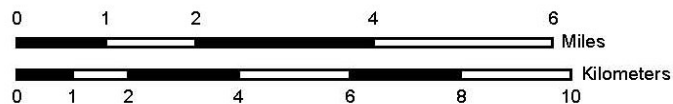
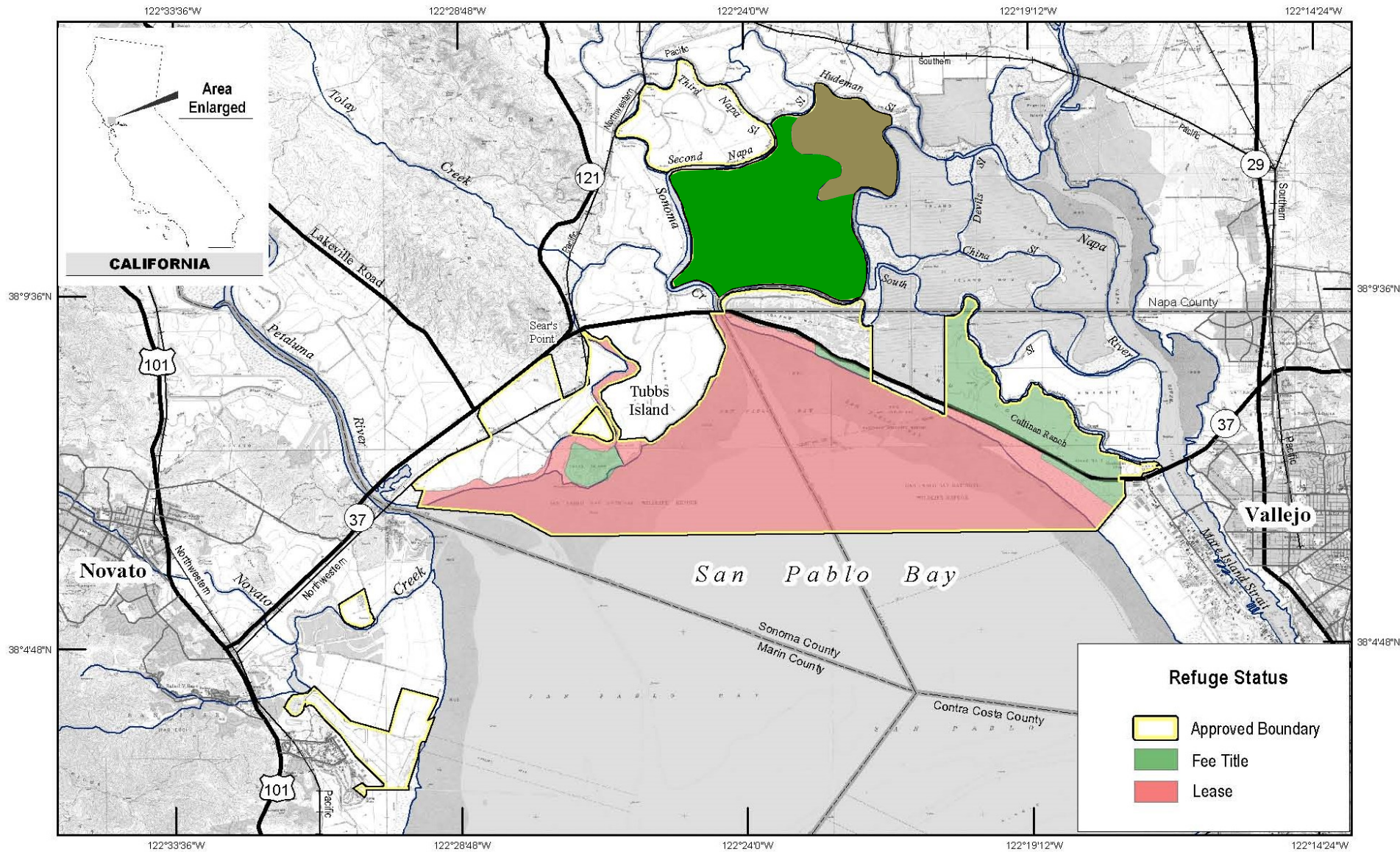


U.S. Fish & Wildlife Service

San Pablo Bay National Wildlife Refuge

Marin, Napa, Sonoma and Solano Counties, California

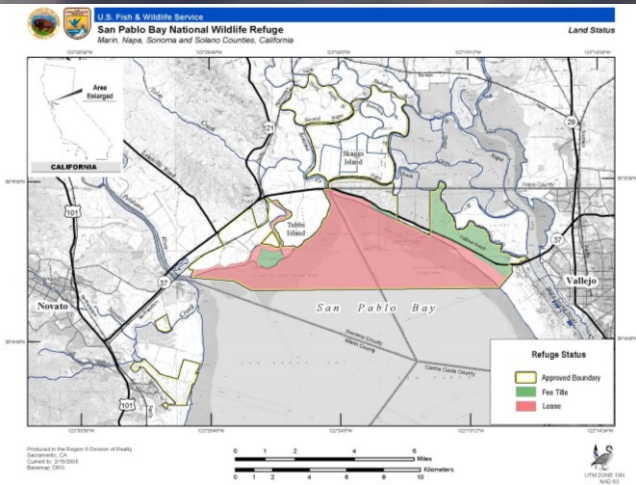
Land Status



Historically . . .

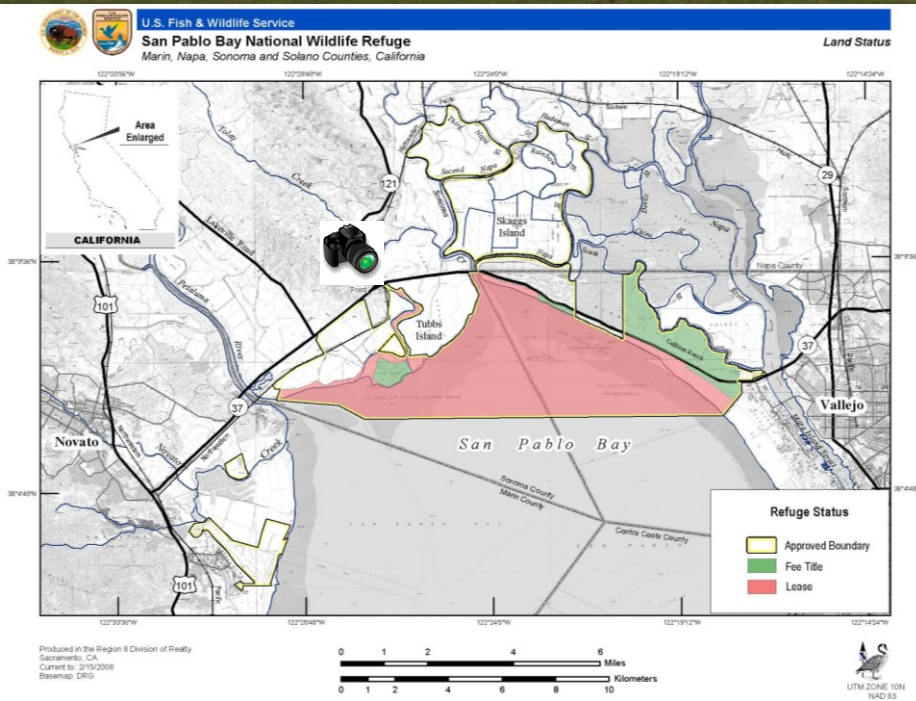


... the pre-Spanish conditions



From Cougar Mountain east to American Canyon

10 miles



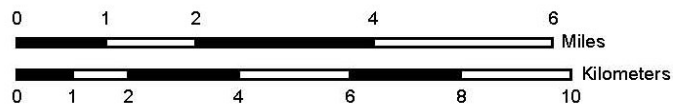
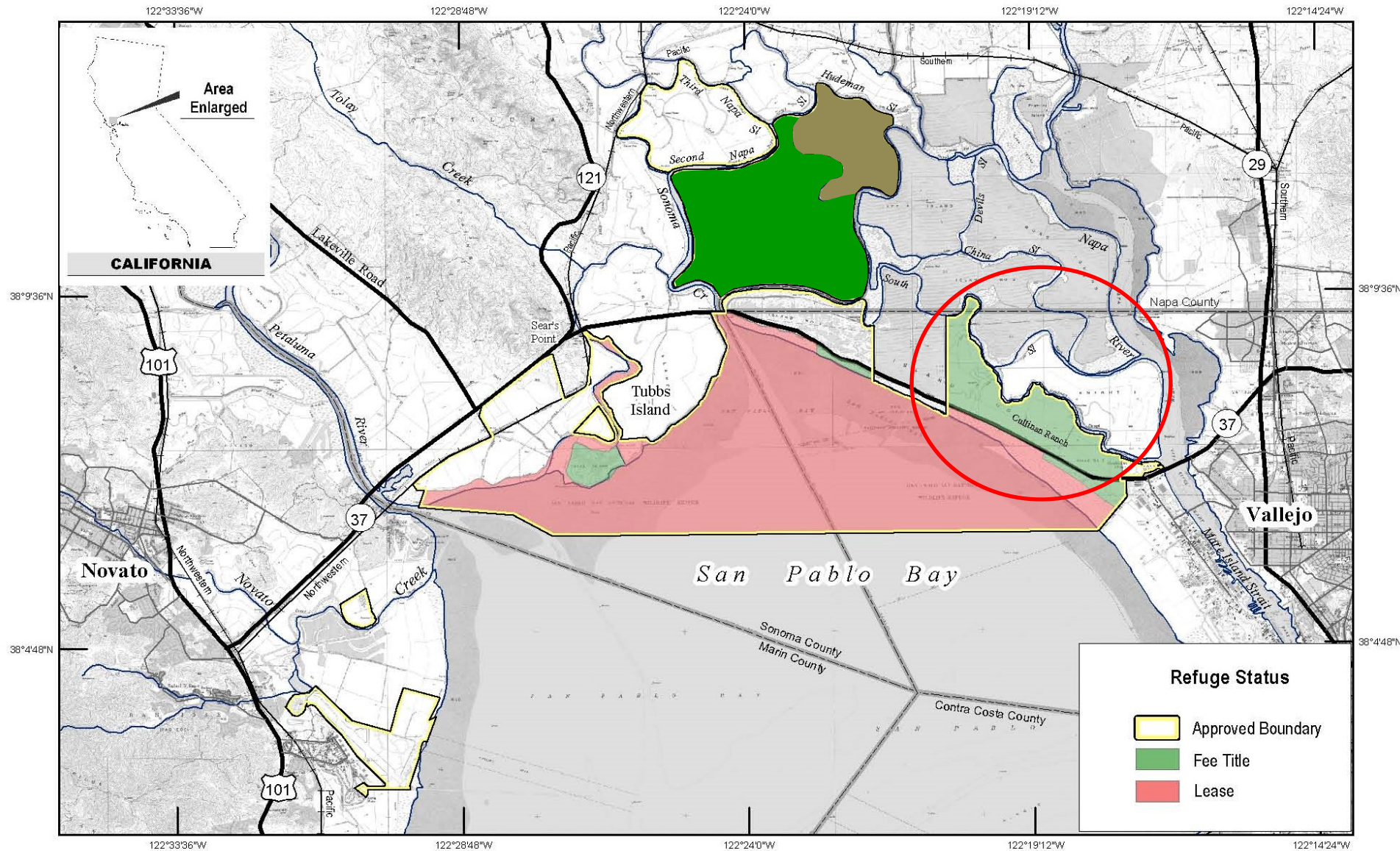


U.S. Fish & Wildlife Service

San Pablo Bay National Wildlife Refuge

Marin, Napa, Sonoma and Solano Counties, California

Land Status





CULLINAN RANCH

Tidal Restoration Project



POND 1 PARKING LOT



GUADACANAL VILLAGE

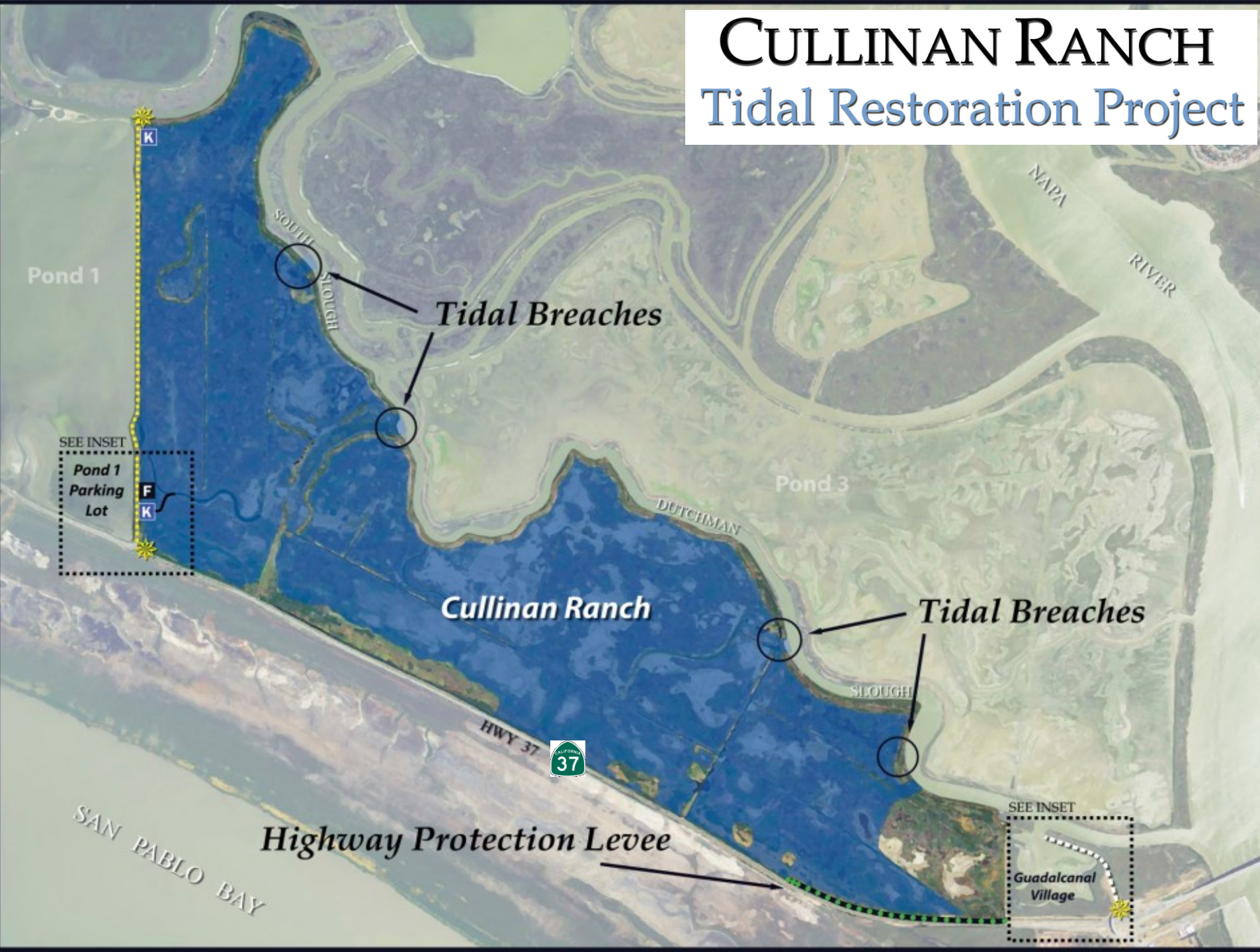
- Proposed trail access (ADA compliant)
- Improved levee (ADA compliant)
- Proposed levee
- Kayak access channel
- Kayak launch ramp
- Fishing pier
- Viewing area with signage and/or benches

NOTE: Improvements to Guadacanal Village public access infrastructure will be constructed once U.S. Fish and Wildlife Service has successfully transferred Guadacanal Village from the California Department of Transportation and as permits and funding allows. Alternatively, U.S. Fish and Wildlife Service will provide a similar level of access on a future North Bay project in addition to the access proposed for that project.



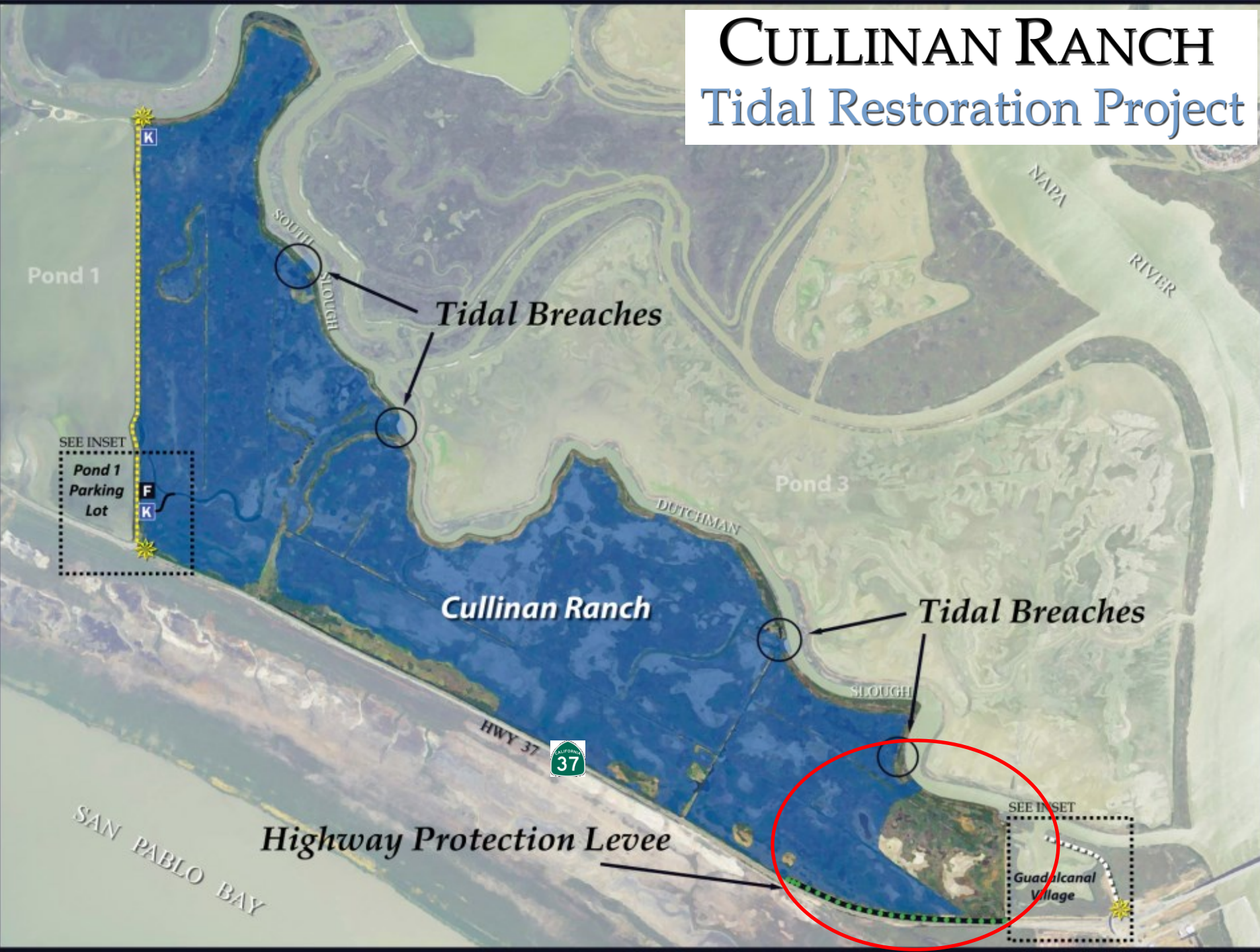
CULLINAN RANCH

Tidal Restoration Project



CULLINAN RANCH

Tidal Restoration Project



CULLINAN RANCH

Tidal Restoration Project





CULLINAN RANCH

Tidal Restoration Project

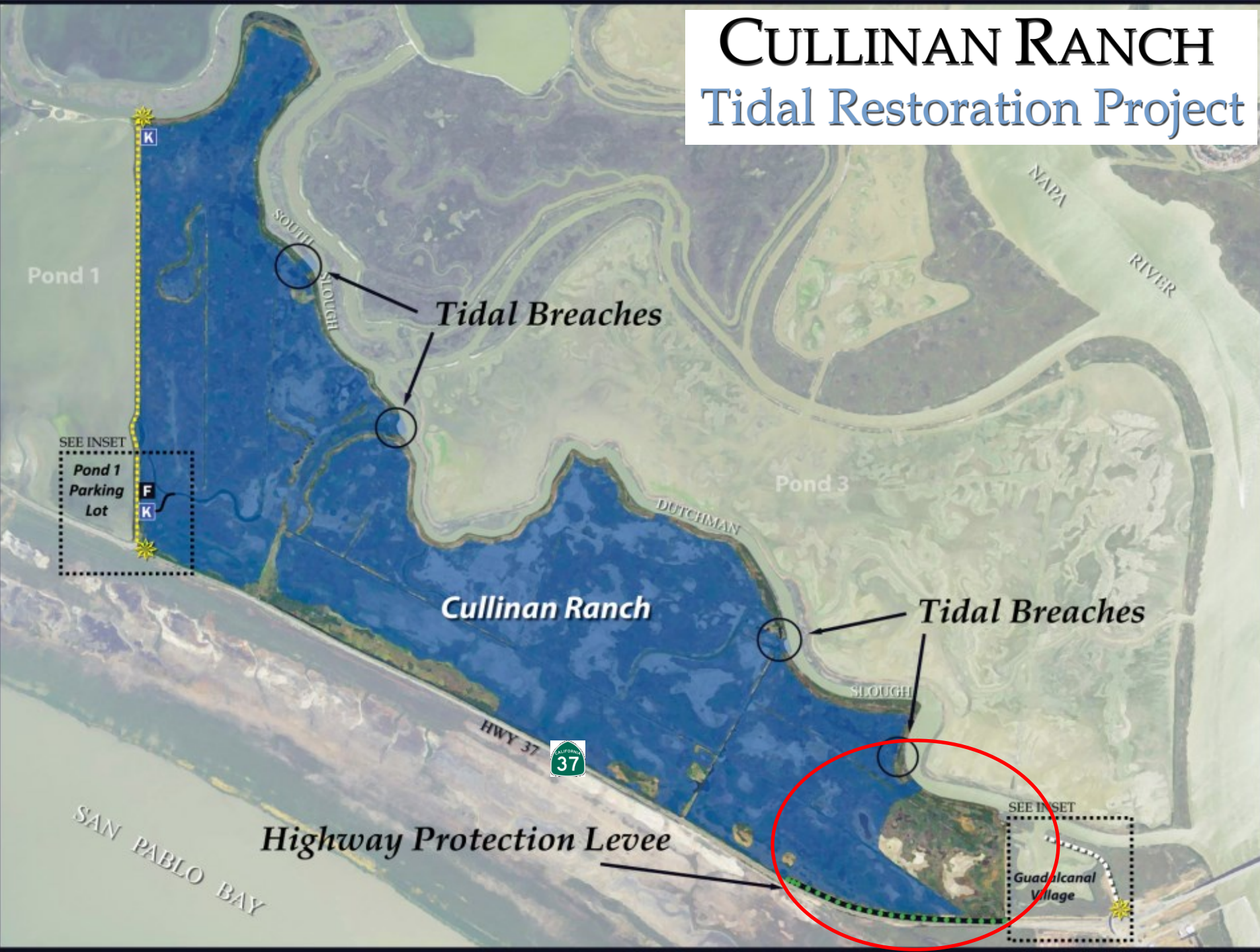
CULLINAN RANCH

Tidal Restoration Project



CULLINAN RANCH

Tidal Restoration Project



CULLINAN RANCH

Tidal Restoration Project

**Deep Water
Habitats**





Pond 1

Existing Gravel Road

New 12'x100' Wooden Fishing Pier

New Kayak Channel

Cullinan Ranch

New ADA Surface

New Acceleration Lane

Existing
Parking Lot

New 15'x130' Kayak Launch

New Viewing Platform

New Pickleweed Bench

New Deceleration Lane

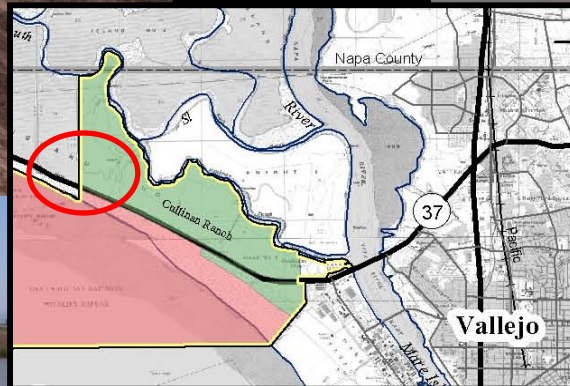
HWY



CULLINAN RANCH

Tidal Restoration Project

Come visit!



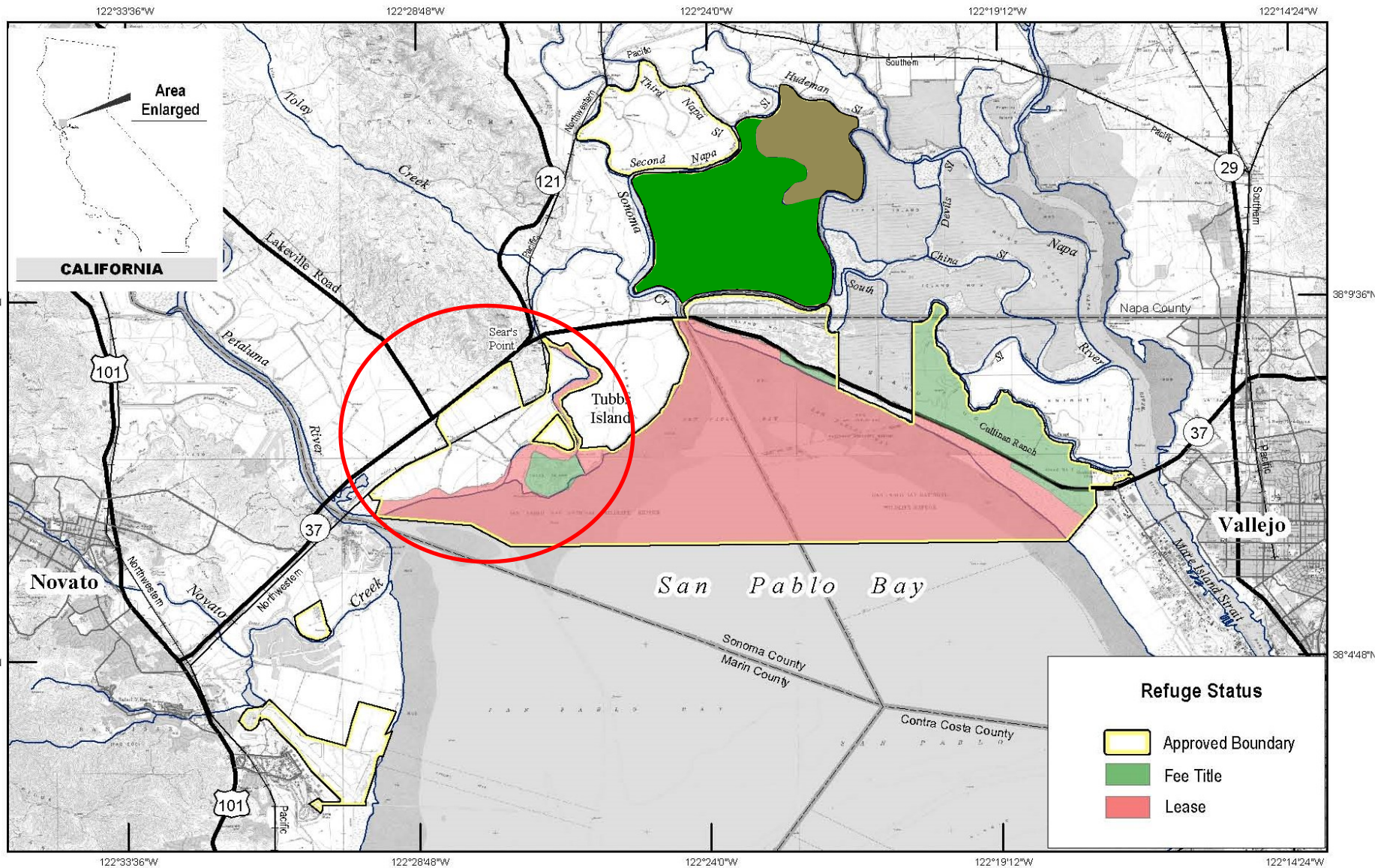


U.S. Fish & Wildlife Service

San Pablo Bay National Wildlife Refuge

Marin, Napa, Sonoma and Solano Counties, California

Land Status



Produced in the Region 8 Division of Realty
Sacramento, CA
Current to: 2/15/2008
Basemap: DRG



Sears Point Restoration Project



Stephen Joseph photo

-  Pump
-  Marsh Mounds
-  Pannes
-  Proposed New Levee
-  Pilot Channels
(Inner=Deep, Outer=Shallow)
-  Ditch Blocks
-  Sidecast Ridges
-  Sidecast Mounds
(See Figure 2-7)
-  Drainage Ditches
-  Project Boundary
-  Culverts
-  Lowered Perimeter Levee
-  SMART Rail Line Through Site
-  New Powerline Alignment



Sears Point Restoration Project

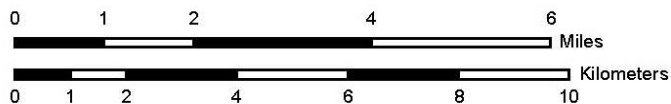
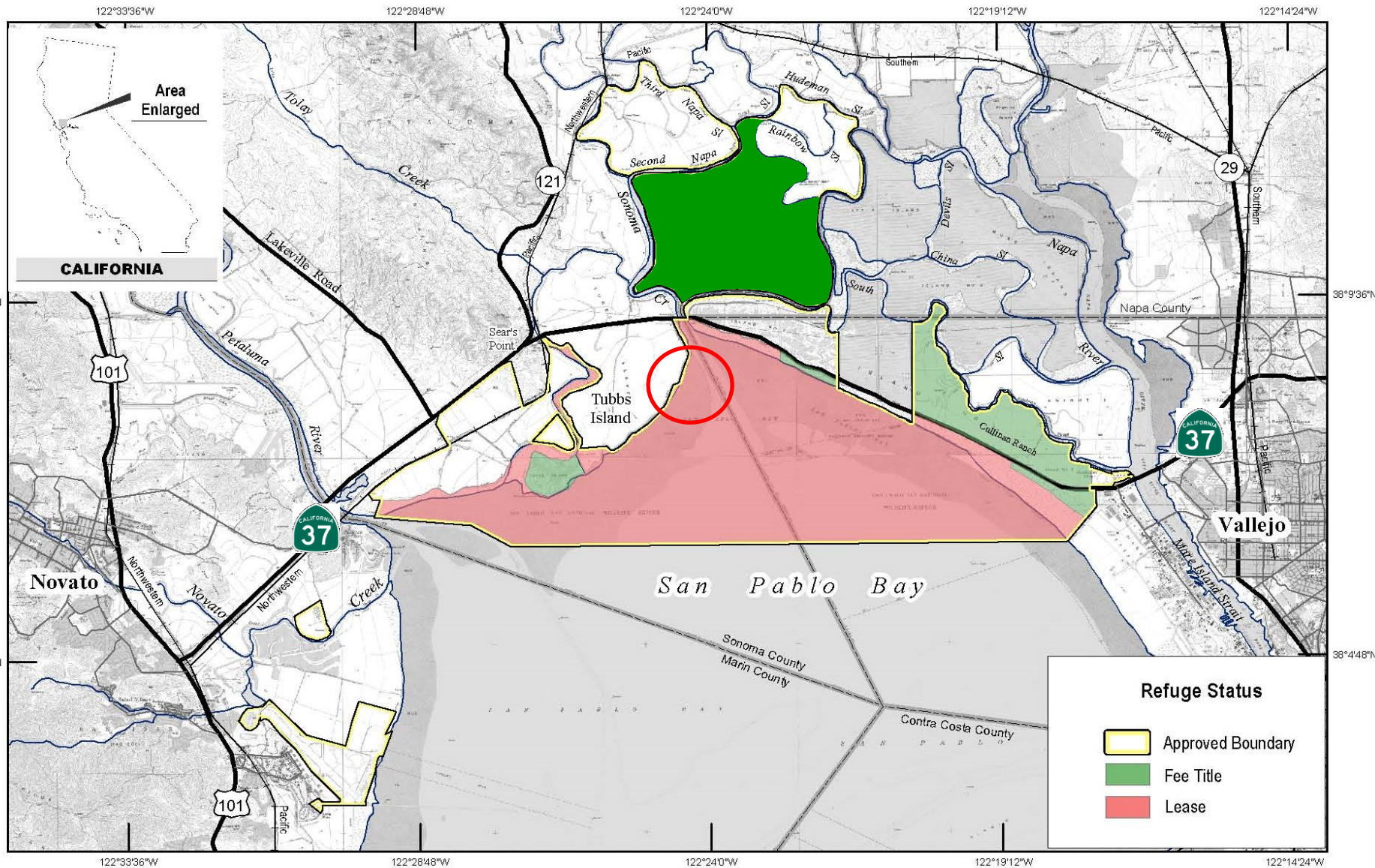


U.S. Fish & Wildlife Service

San Pablo Bay National Wildlife Refuge

Marin, Napa, Sonoma and Solano Counties, California

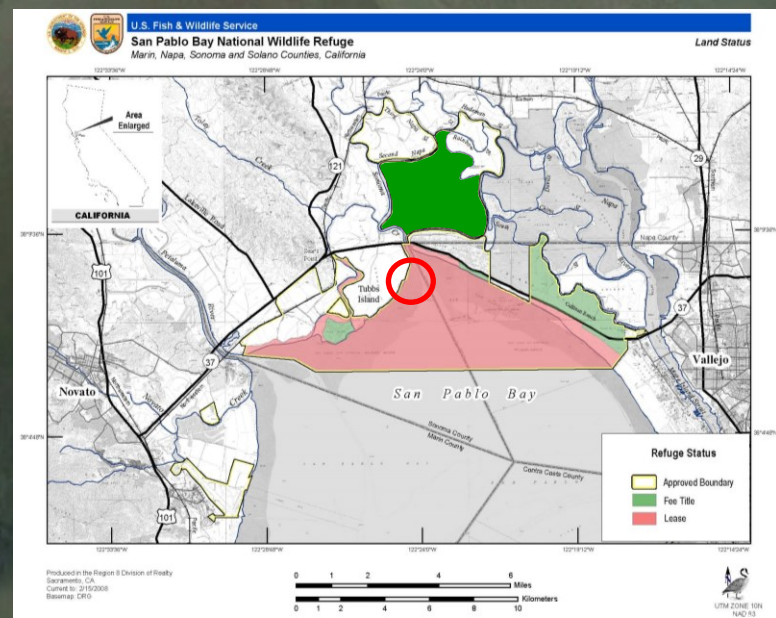
Land Status



Sonoma Creek Salt Marsh Enhancement Project



Sediment Accretion Over Time



Sonoma Creek Salt Marsh Enhancement Project



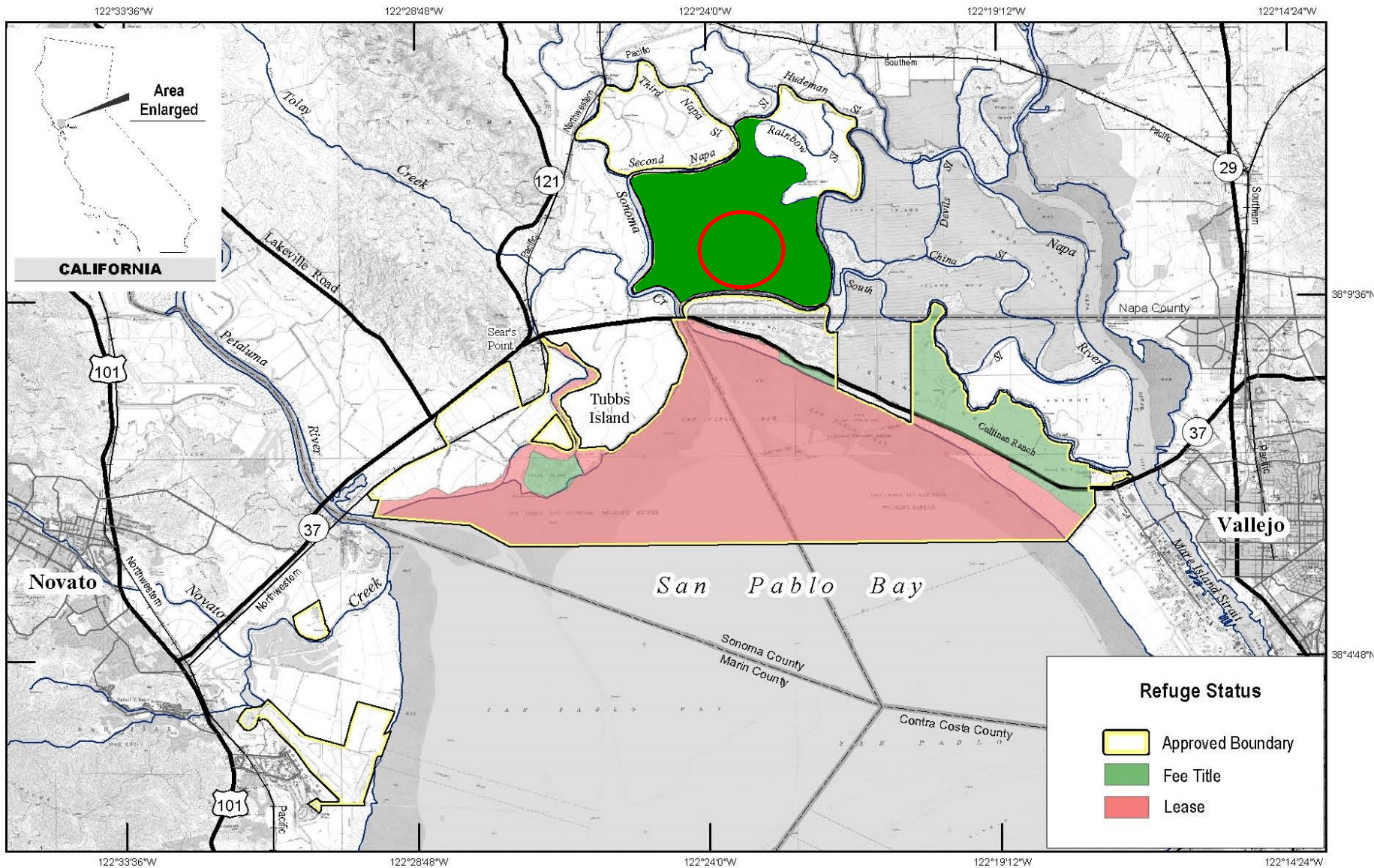


U.S. Fish & Wildlife Service

San Pablo Bay National Wildlife Refuge

Marin, Napa, Sonoma and Solano Counties, California

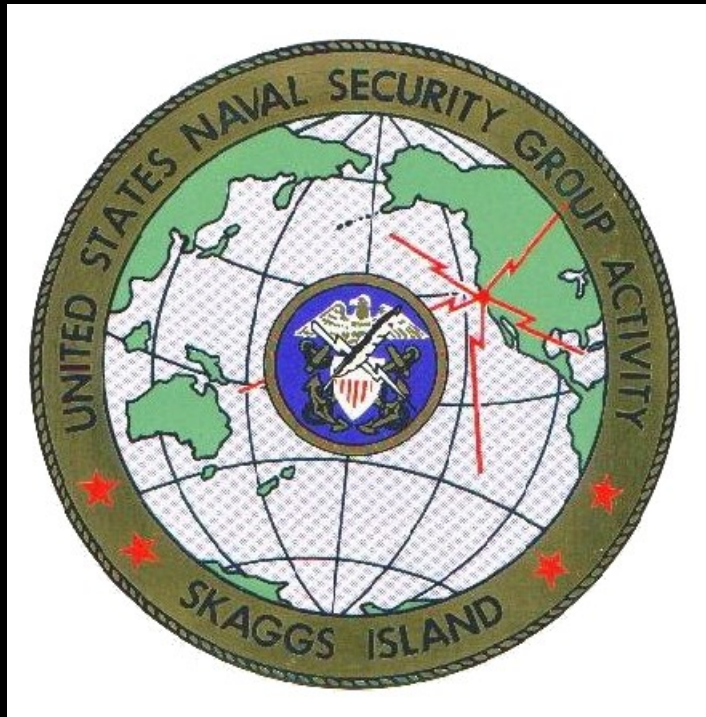
Land Status



Estuarine marshland . . .

Skaggs Island . . .

Oat-hay farmland 1920-ish . . .



. . . 1941

U.S. Navy . . .

1993 decommissioned . . .

2011 Skaggs Island Unit . . .

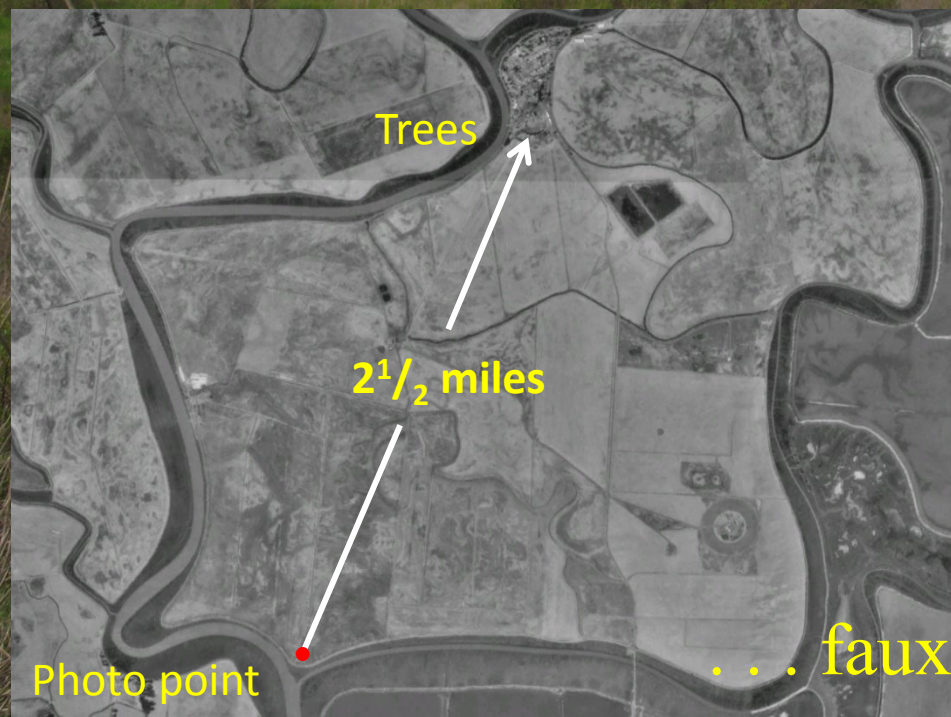
. . . Now what?



Ramal Road



Skaggs Island Unit, San Pablo Bay National Wildlife Refuge



Trees

2 1/2 miles

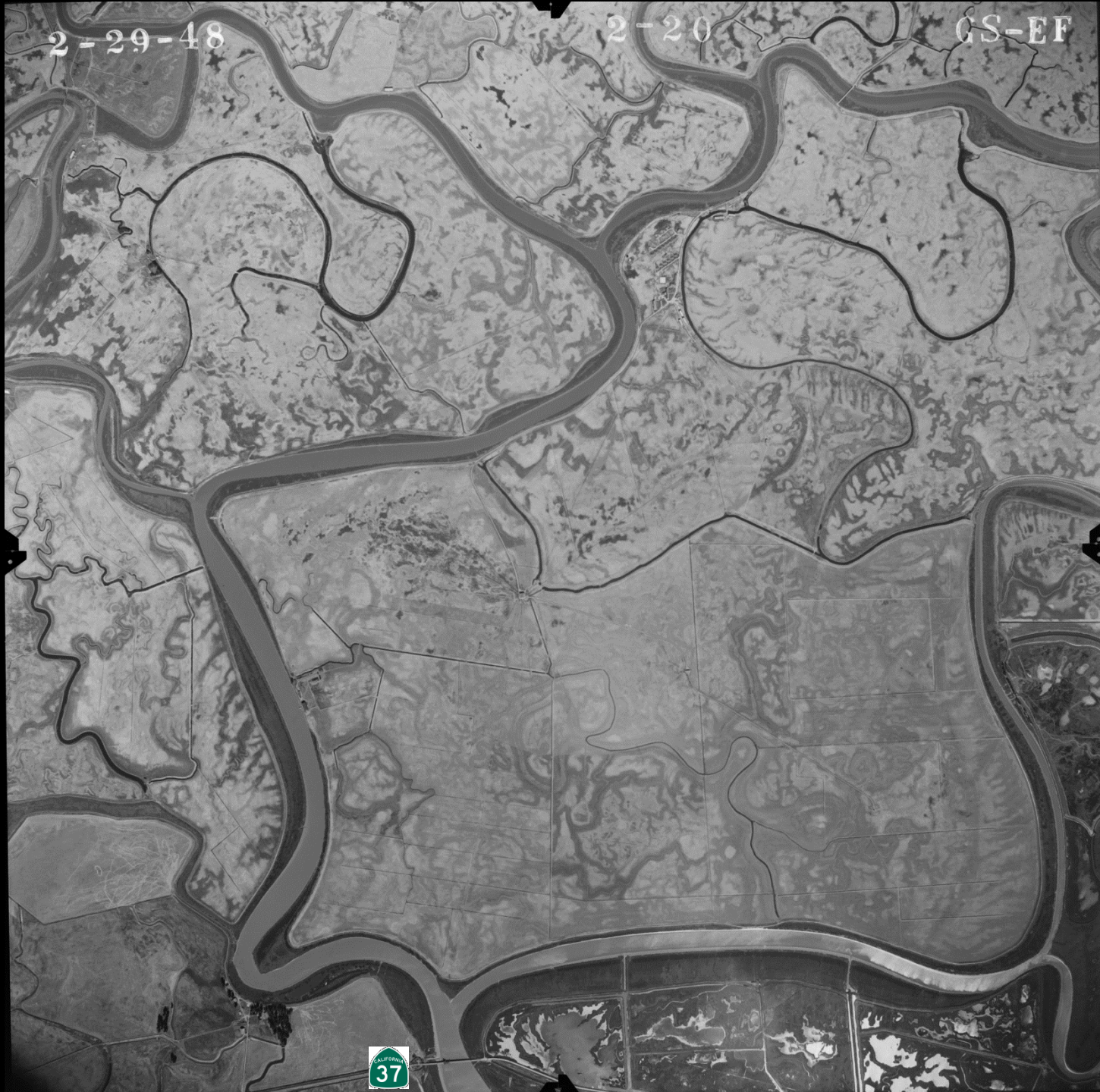
Photo point

... faux upland 6ft+ below sea level

2-29-48

2-20

GS-EF





... a mere 54 miles of trenching



An aerial photograph of a river delta, showing a complex network of dark, winding water channels branching out from a larger body of water at the top. The surrounding land is a light brown, textured surface, possibly a wetland or marsh. The text is overlaid in a yellow, serif font.

Remember that *crows nest* view?

To what extent can we turn back the clock?

Can we?

Should we?

Benefits marsh endemics, fisheries, waterfowl, and other wildlife



