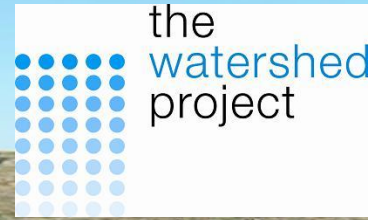


# Wildcat Creek Fish Passage and Community Benefits



California Fish Passage Forum  
Annual Steering Committee Meeting

December 5, 2024





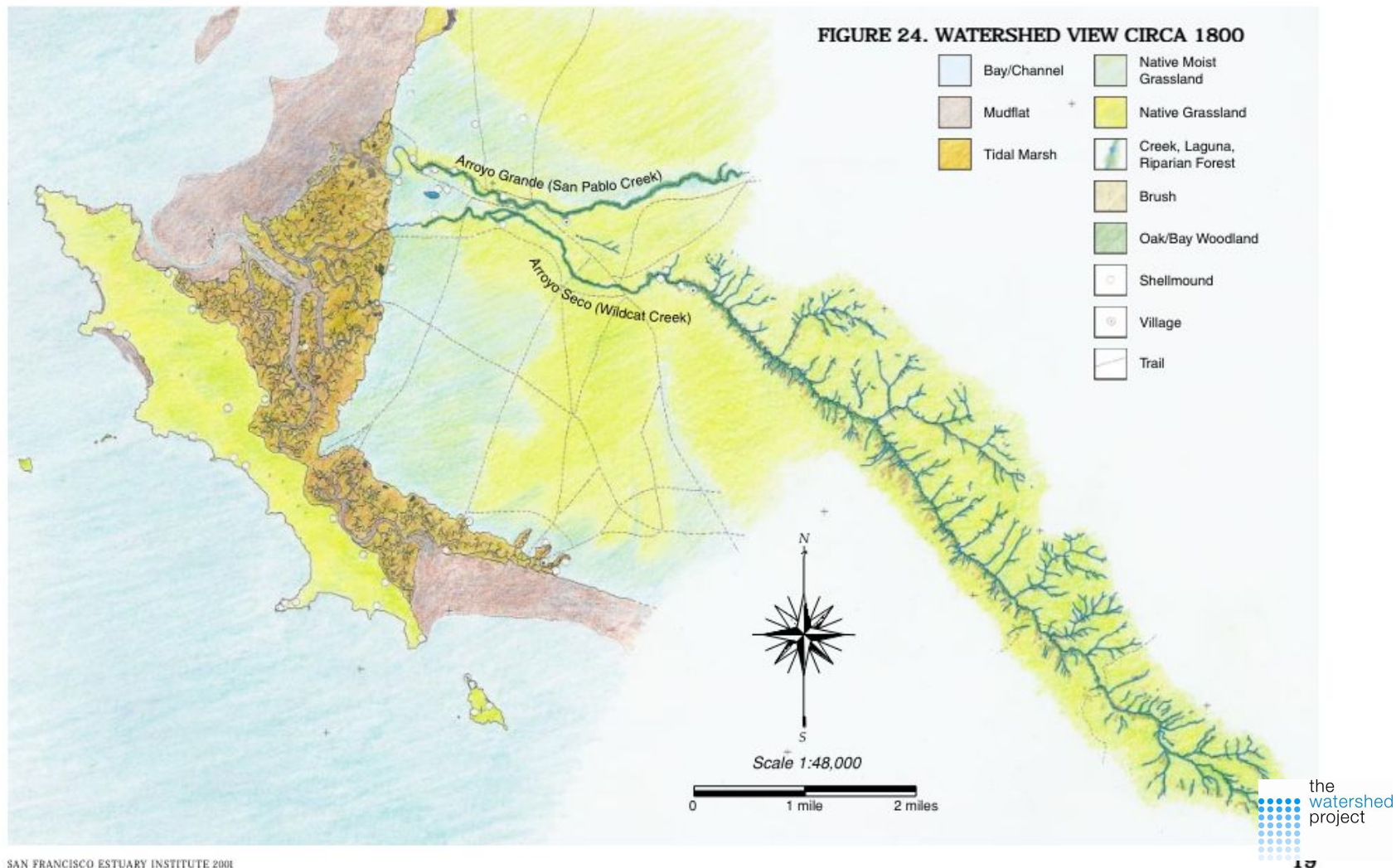


# Cemented section under the railway bridge



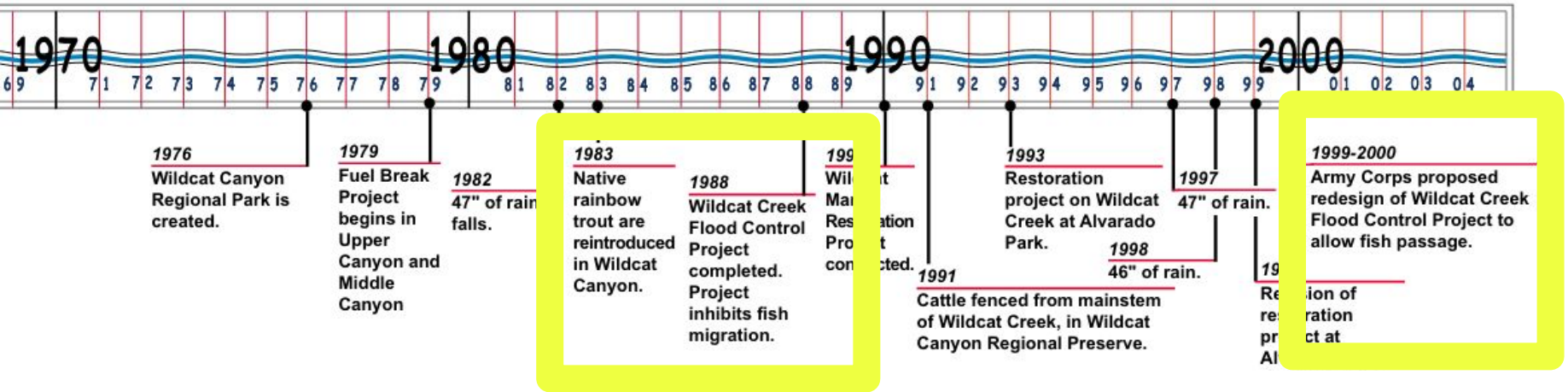


**FIGURE 24. WATERSHED VIEW CIRCA 1800**





Steelhead trout photo courtesy of Oregon State University via Wikimedia Commons.



SAN FRANCISCO ESTUARY INSTITUTE 2001













# The Fish Passage and Steelhead

## Steelhead Trout and Chinook Salmon

Before people used the water and land on an industrial level, the creeks of California teemed with many fish. Among the most notable were Steelhead Trout and Chinook Salmon, both of which are now endangered. These are 'anadromous' fish meaning their eggs hatch in creeks and once the fish are large enough, they swim to the ocean, where they spend most of their lives. When it's time to lay eggs, they migrate back to their birthplace, often requiring them to swim for miles upstream! After laying the eggs, they return to the ocean, and the cycle starts over.

## Trucha Arco Iris Y Salmón Chinook

Antes de que la gente utilizara el agua y la tierra a nivel industrial, los arroyos de California estaban llenos de peces. Entre los más notables se encuentran la trucha Steelhead y el salmón Chinook, los cuales ahora están en peligro de extinción. Estos son peces "anádromos", lo que significa que sus huevos eclosionan en arroyos y una vez que los peces son lo suficientemente grandes, nadan hasta el océano, donde pasan la mayor parte de sus vidas. Cuando llega el momento de poner huevos, migran de regreso a su lugar de nacimiento, algunas veces obligando a nadar kilómetros río arriba! Después de poner los huevos, regresan al océano y el ciclo comienza de nuevo.

## The Fish Passage

Today, many barriers to fish migration exist in creeks. Beneath this railway bridge, the concrete-paved creek bed is impassable for fish. A fish passage was installed to help them get upstream.

## El paso de los peces

Hoy en día, existen muchos obstáculos a la migración de peces en los arroyos. Debajo de este puente ferroviario, el lecho del arroyo es intratable para los peces. Se instaló un pasaje para ayudar a los peces durante sus viajes.



These boulders mimic natural stream beds. They create pools with low flows, where fish can rest.

Fish can jump above these step-like structures.



Learn more about these plants and animals and others native to Wildcat Watershed

## Local Tribes and their Creeks

This part of the East Bay is the ancestral homeland of the Chochenyo (cho-chen-yo) speaking people, part of the Ohlone (oh-loh-nee) peoples. In their language, the region is called Huchiun (hoo-choyon). The First Peoples had thriving communities that depended on the natural resources around them for food, tools, shelter, and cultural resources. Fish were an important food source, and they treated Wildcat Creek as they would treat a close friend or family member.

## Tribus Locales Y Sus Arroyos

Esta parte del East Bay es la patria ancestral del pueblo de habla chochenyo, parte de los pueblos ohlone (o-lo-ni). En su idioma, la región se llama Huchiun. Los Primeros Pueblos tenían comunidades prósperas que dependían de los recursos naturales que los rodeaban para obtener alimentos, herramientas, refugio y recursos culturales. El pescado era una fuente importante de alimento y trataban a Wildcat Creek como tratarían a un amigo cercano o un familiar.

## Chochenyo Words for Wildcat Creek

The Confederated Villages of Lisjan, a group of six tribes that lived here, knew a lot about the plants and animals of this area. Here are some of the plants and animals that were, and still are, important to them, and us.

Los Pueblos Confederados de Lisjan, un grupo de seis tribus que vivían aquí, sabían mucho sobre las plantas y animales de esta zona. Estas son algunas de las plantas y animales que fueron, y siguen siendo, importantes para ellos y para nosotros.



**Paalatmin**  
Orange Bellied Newt  
Triton de california

**Šaakani**  
Mallard Duck  
Pato Mallard



**Tuyuk**  
Toyon  
Jugueteon



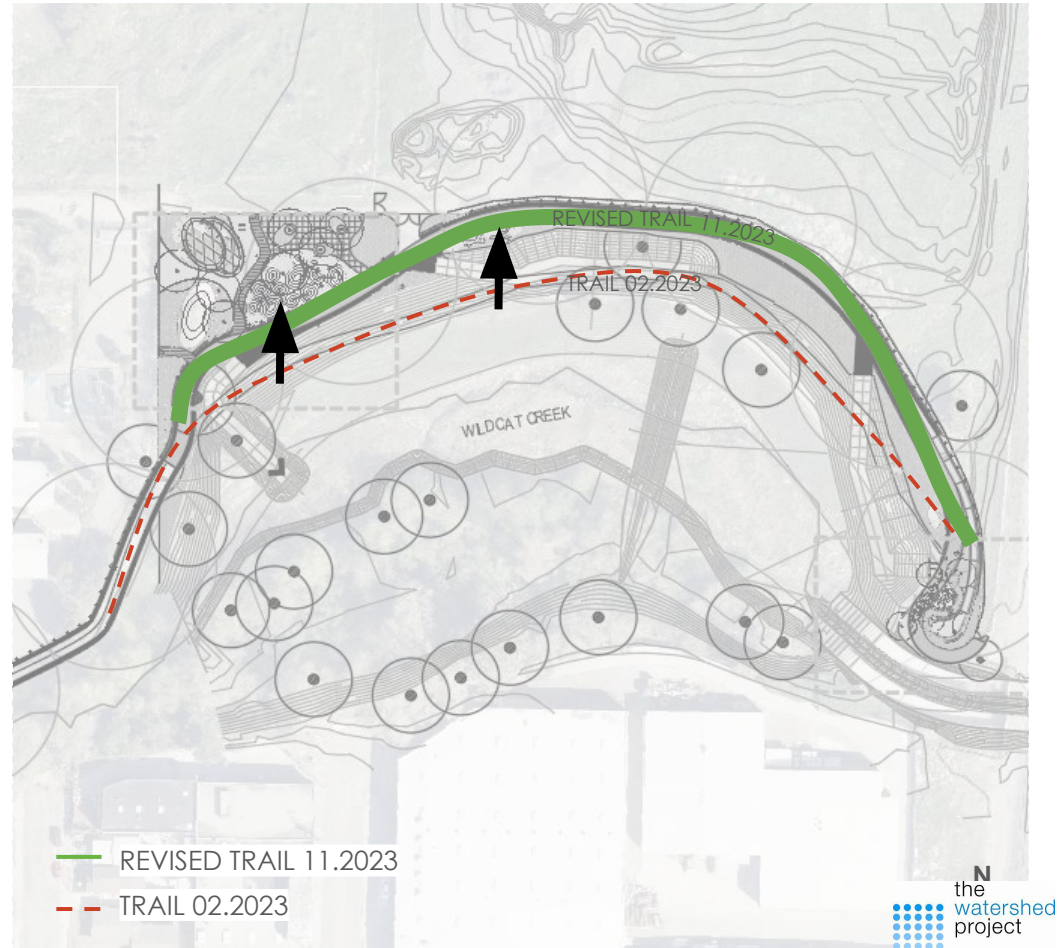
**Uuner**  
Onoleaf Onion  
Ajo de una oja



**Riipin Tree**  
Pacific Willow  
Sauce brillante

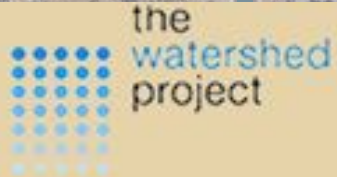
# New Fish Passage Design

# UPDATE: BASIN MOVED NORTHWARD





# Community Amenities Design Working WITH the Community



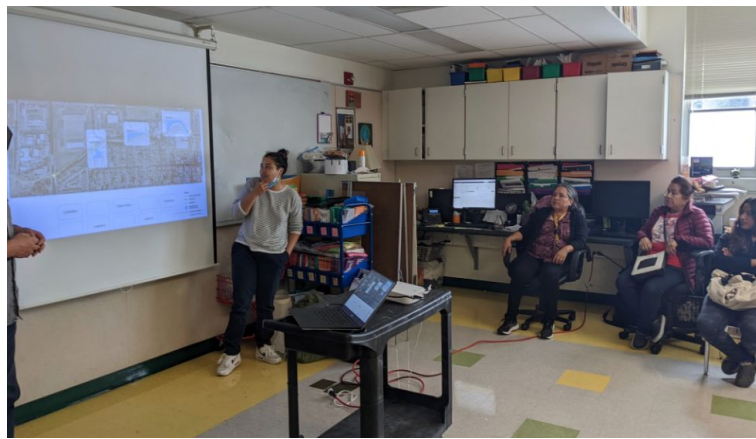
MITHŪN



FlowWest







## Presentations, Meetings



## Tours, Design Charrettes





Book readings and hands-on activities

# SURVEY- DESIGN ELEMENTS

## WILDCAT CREEK: POTENTIAL AMENITIES



### LEGEND

- WILDCAT CREEK TRAIL
- POTENTIAL SITE
- PAVED ROAD
- TRAIL FENCE

### POTENTIAL IMPROVEMENTS



LIGHTING



SEATING



TRASH CANS



NATURAL HABITAT

What would you like to see along the trail, and where?



NATURE PLAY



OUTDOOR CLASSROOM



TOUCHER PLAY



DOG PARK



BBQ + PICNIC



FITNESS

Survey on community preferences

English & Spanish



# Community Survey – Design Elements





# Design of Community Benefits Elements



# WILDCAT CREEK DESIGN SET











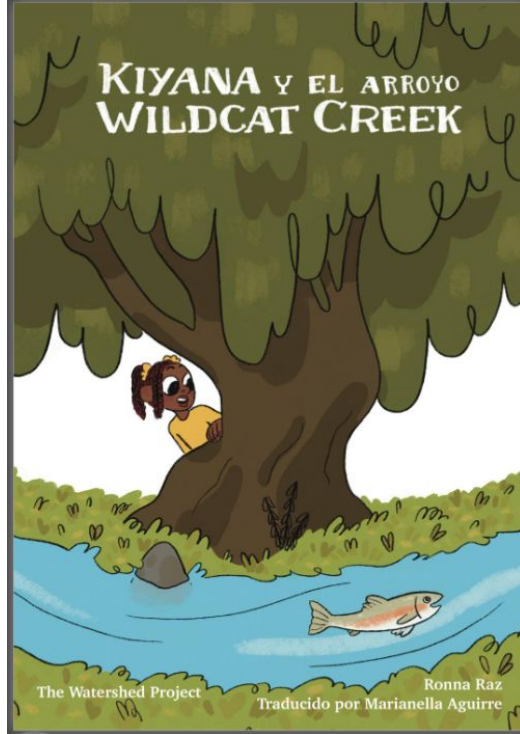
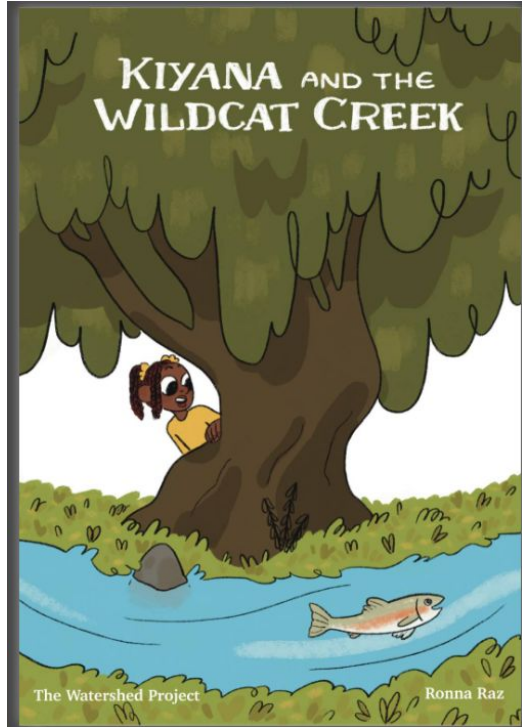






# Additional Deliverables to the Community

# Storybook



It has been a very rainy couple of days. The playground was wet, the creek by the school filled with water, and all the plants were bright and green. Kiyana and her friends decided to spend recess collecting flowers through the fence by the playground. The flowers were the best on the other side of the fence, where they grew by the Wildcat Creek.

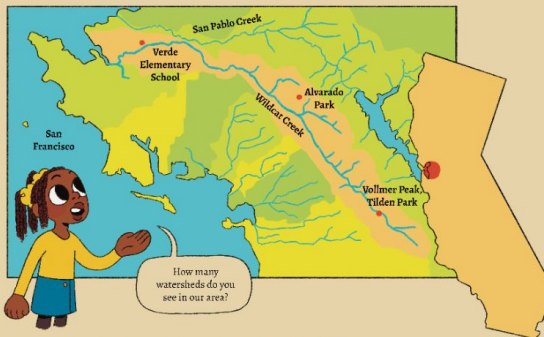
Suddenly, Kiyana spotted something moving in the water!





# Interpretive Signs

## What is a Watershed and What can We do?



### What is a Watershed?

Each of us lives in a watershed -- an area of land where water flows from the highest point in the landscape (mountains, hills) toward the lowest point (creeks, lakes, marshes) before emptying out into the ocean. Water used by people outdoors for watering plants or washing cars will also end up in our creeks.

Around the San Francisco Bay, all water eventually drains into the Bay. We are part of a giant watershed right where we live, which means that we are connected to different types of water bodies even if we can't see them.

Watersheds and their creeks provide important living space, food, and water to many plants and animals, including fish, birds, and amphibians.

### ¿Qué Es Una Cuenca?

Cada uno de nosotros vive en una cuenca, un área de tierra donde el agua fluye desde el punto más alto del paisaje (montañas, colinas) hacia el punto más bajo (arroyos, lagos, pantanos) antes de desembocar en el océano. El agua que la gente usa al aire libre para regar plantas o lavar autos también terminará en nuestros arroyos.

Alrededor de la Bahía de San Francisco, toda el agua eventualmente desemboca en la Bahía. Somos parte de una cuenca gigante justo donde vivimos, lo que significa que estamos conectados a diferentes tipos de cuerpos de agua incluso si no podemos verlos.

Las cuencas hidrográficas y sus arroyos proporcionan importante espacio vital, alimento y agua para muchas plantas y animales, incluidos peces, aves y anfibios.

### Where does Wildcat Creek Flow?

The starting point of all creeks is their highest elevation, and for Wildcat Creek, it is Vollmer Peak in the Berkeley Hills. From there, the creek flows along Wildcat Canyon from south to north. Near Alvarado Park, it turns West, toward the Bay. Not far from where we stand, Wildcat Creek is very close to San Pablo Creek. Before channelization, the human process of straightening and deepening channels in rivers, these two creeks would sometimes connect before entering the Bay.

### ¿Dónde fluye Wildcat Creek?

El punto de partida de todos los arroyos es su elevación más alta, y para Wildcat Creek, es Vollmer Peak en Berkeley Hills. Desde allí, el arroyo fluye a lo largo de Wildcat Canyon de sur a norte. Cerca del Parque Alvarado, gira hacia el Oeste, hacia la Bahía. No muy lejos de donde nos encontramos, Wildcat Creek está muy cerca de San Pablo Creek. Antes de la canalización, el proceso humano de enderezar y profundizar los canales de los ríos, estos dos arroyos a veces se conectaban antes de ingresar a la Bahía.



## What can People do?

Today, nature is often broken up and used for buildings, roads, factories, and other things that people need. Very few areas are left to support the native animals and plants and even these areas are impacted by air, water, and soil pollution. We can learn to appreciate the benefits of nature to humans and work together to restore and protect the natural environment.

### What can you do?

- Learn about your watershed, the plants and animals that call it home, and the challenges it faces.
- Join workdays to clean up trash along the creek and to restore habitats by planting native plants.
- Join the Wildcat Creek Watershed Stewardship group.
- Read our storybook about Kiyana and her friends who decide to explore Wildcat Creek, and find out how they can help.

### ¿Qué puede hacer la gente?

Hoy en día, la naturaleza se fragmenta y se utiliza para construir edificios, carreteras, fábricas y otras cosas que la gente necesita. Quedan muy pocas áreas para sostener a los animales y plantas nativos e incluso estas áreas se ven afectadas por la contaminación del aire, el agua y la tierra. Podemos aprender a apreciar los beneficios de la naturaleza para los humanos y trabajar juntos para restaurar y proteger el medio ambiente natural.

### ¿Qué puedes hacer tú?

- Aprende sobre tu cuenca, las plantas y animales que la habitan y los desafíos que enfrenta.
- Únete a jornadas laborales para limpiar la basura a lo largo del arroyo y restaurar hábitats plantando plantas nativas.
- Únete al grupo de administración de la cuenca hidrográfica de Wildcat Creek.
- Lea nuestro libro de cuentos sobre Kiyana y sus amigos que deciden explorar Wildcat Creek y descubra cómo pueden ayudar.



Read our storybook about Kiyana and her friends who decide to help Wildcat Creek



For those and more, contact us at The Watershed Project

# Interpretive Signs

## The Fish Passage and Steelhead



### Steelhead Trout and Chinook Salmon

Before people used the water and land on an industrial level, the creeks of California teemed with many fish. Among the most notable were Steelhead Trout and Chinook Salmon, both of which are now endangered. These are 'anadromous' fish meaning their eggs hatch in creeks and once the fish are large enough, they swim to the ocean, where they spend most of their lives. When it's time to lay eggs, they migrate back to their birthplace, often requiring them to swim for miles upstream! After laying the eggs, they return to the ocean, and the cycle starts over.

### Trucha Arco Iris Y Salmón Chinook

Antes de que la gente utilizara el agua y la tierra a nivel industrial, los arroyos de California estaban llenos de peces. Entre los más notables se encuentran la trucha Steelhead y el salmón Chinook, los cuales ahora están en peligro de extinción. Estos son peces "anádromos", lo que significa que sus huevos eclosionan en arroyos y una vez que los peces son lo suficientemente grandes, nadan hasta el océano, donde pasan la mayor parte de sus vidas. Cuando llega el momento de poner huevos, migran de regreso a su lugar de nacimiento, algunas veces obligando a nadar kilómetros río arriba! Después de poner los huevos, regresan al océano y el ciclo comienza de nuevo.

### The Fish Passage

Today, many barriers to fish migration exist in creeks. Beneath this railway bridge, the concrete-paved creek bed is impassable for fish. A fish passage was installed to help them get upstream.

### El paso de los peces

Hoy en día, existen muchos obstáculos a la migración de peces en los arroyos. Debajo de este puente ferroviario, el lecho del arroyo es intransitable para los peces. Se instaló un pasaje para ayudar a los peces durante sus viajes.

This way the fish can get upstream safely!

These boulders mimic natural stream beds. They create pools with low flows, where fish can rest.

Fish can jump above these step-like structures.



Learn more about these plants and animals and others native to Wildcat Watershed

### Local Tribes and their Creeks

This part of the East Bay is the ancestral homeland of the Chochenyo (cho-chen-yo) speaking people, part of the Ohlone (oh-loh-nee) peoples. In their language, the region is called Huchiuin (hoo-chyoon). The First Peoples had thriving communities that depended on the natural resources around them for food, tools, shelter, and cultural resources. Fish were an important food source, and they treated Wildcat Creek as they would treat a close friend or family member.

### Tribus Locales Y Sus Arroyos

Esta parte del East Bay es la patria ancestral del pueblo de habla chochenyo, parte de los pueblos ohlone (o-lo-ni). En su idioma, la región se llama Huchiuin. Los Primeros Pueblos tenían comunidades prósperas que dependían de los recursos naturales que los rodeaban para obtener alimentos, herramientas, refugio y recursos culturales. El pescado era una fuente importante de alimento y trataban a Wildcat Creek como tratarían a un amigo cercano o un familiar.

### Chochenyo Words for Wildcat Creek

The Confederated Villages of Lisjan, a group of six tribes that lived here, knew a lot about the plants and animals of this area. Here are some of the plants and animals that were, and still are, important to them, and us.

Los Pueblos Confederados de Lisjan, un grupo de seis tribus que vivían aquí, sabían mucho sobre las plantas y animales de esta zona. Estas son algunas de las plantas y animales que fueron, y siguen siendo, importantes para ellos y para nosotros.



Paalatmin  
Orange Bellied Newt  
Triton de california



Šaakani  
Mallard Duck  
Pato Mallard



Tuyuk  
Toyon  
Jugueteeon



Uuner  
Oneleaf Onion  
Ajo de una oja



Riipin Tree  
Pacific Willow  
Sauce brillante



# Tribal Collaboration



## TRIBAL STORIES

### FROM THE COAST AND WATERSHEDS OF NORTH RICHMOND, CALIFORNIA



*Deja Gould and Cheyenne Zepeda on Creeks*





There's so much trash...



There's no path, I don't wanna fall!

Umm... Maybe we shouldn't be here...

'Oh no,' thought Kiyana, 'We can't turn back, we have to find the trout!' Maybe if she wasn't scared, everyone else wouldn't be either! Kiyana took a big breath, and walked on confidently.

Suddenly, a flower caught Kiyana's eye. It was long and bright red, and it had little red stringy things coming out of it.

"Guys! Come look at this flower, it's beautiful..." Kiyana motioned to the others, "It's not scary here, it's just the creek."



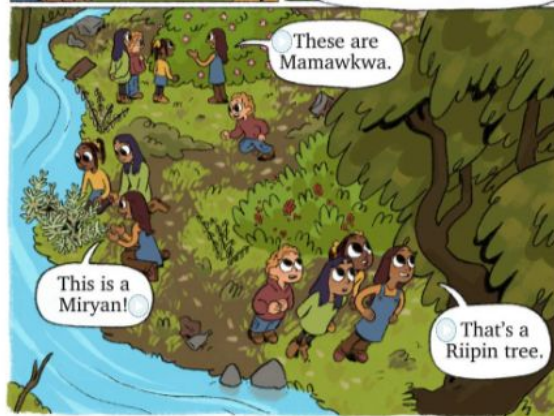
I know that one! In Chochenyo we call them Saawana.

It's a native plant, which means it's important for the creek.



What's Chochenyo?

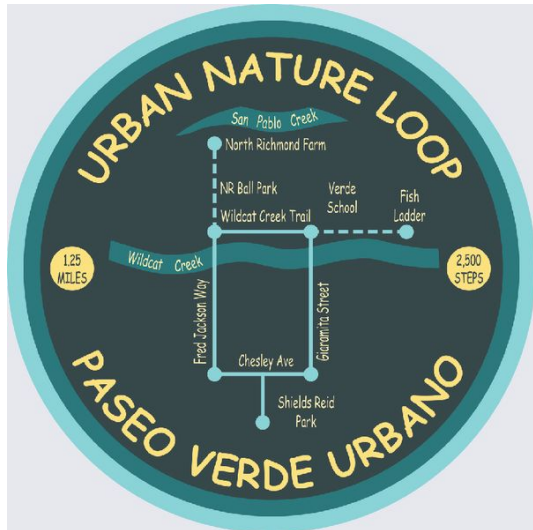
It's the language of the Lisjan Tribe, who are native around the Wildcat Creek!



These are Mamawkwa.

This is a Miryan!

That's a Riipin tree.



## Plants and Animals of Wildcat Creek

Start Tour

► Play Audio

► Play Video

Native plants and animals are well adapted to the unique climate, water regime, and geography of their environment. Here, we highlight a couple of the native plants and animals that also call this watershed home.

In our watershed, we can find grasses,



## Native Oaks and Their Ecosystem

Start Tour

► Play Video



In the vacant lot across from you is a small stand of Coastal Live Oaks (scientific name: *Quercus agrifolia*) as well as a large Willow tree (scientific name: *Salix glauca* L.). These

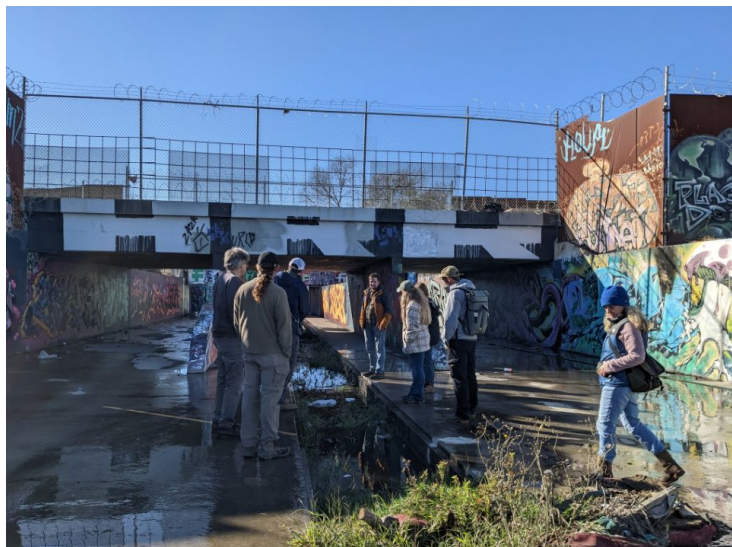






## Community Concerns:

- Gravel and Sediment Piles
- Safety Issues
- Advocacy



Delta Unit



West Contra Costa Task Force

# The Work Ahead





# Wildcat Watershed Initiative for Leadership and Development (WWILD)



## WILDCAT CREEK ALLIANCE

Join your neighbors in helping advance restoration and stewardship efforts related to the Wildcat Creek Watershed!

Scan here to join!





## JOIN OUR

- LEARN OPPORTUNITIES**  
Gain knowledge through ecosystem field trips
- RESTORATION**  
Participate in restoration projects along Wildcat Creek
- COMMUNITY**  
Collect data and improve water quality
- STRATEGIC PLANNING AND LEADERSHIP**  
Enhance watershed health and climate resilience by helping ensure that community preferences are included in future planning



## WE ARE LOOKING FOR YOU! PAID, PART-TIME OPPORTUNITY



## LOWER WILDCAT CREEK COMMUNITY ADVISORY GROUP

Take part in shaping the future of the creek alongside your fellow neighbors

**ENGAGE IN DISCUSSIONS TO INFORM LOCAL GOVERNMENT ON COMMUNITY PREFERENCES**

Learning and workforce development opportunities



SCAN HERE TO JOIN!

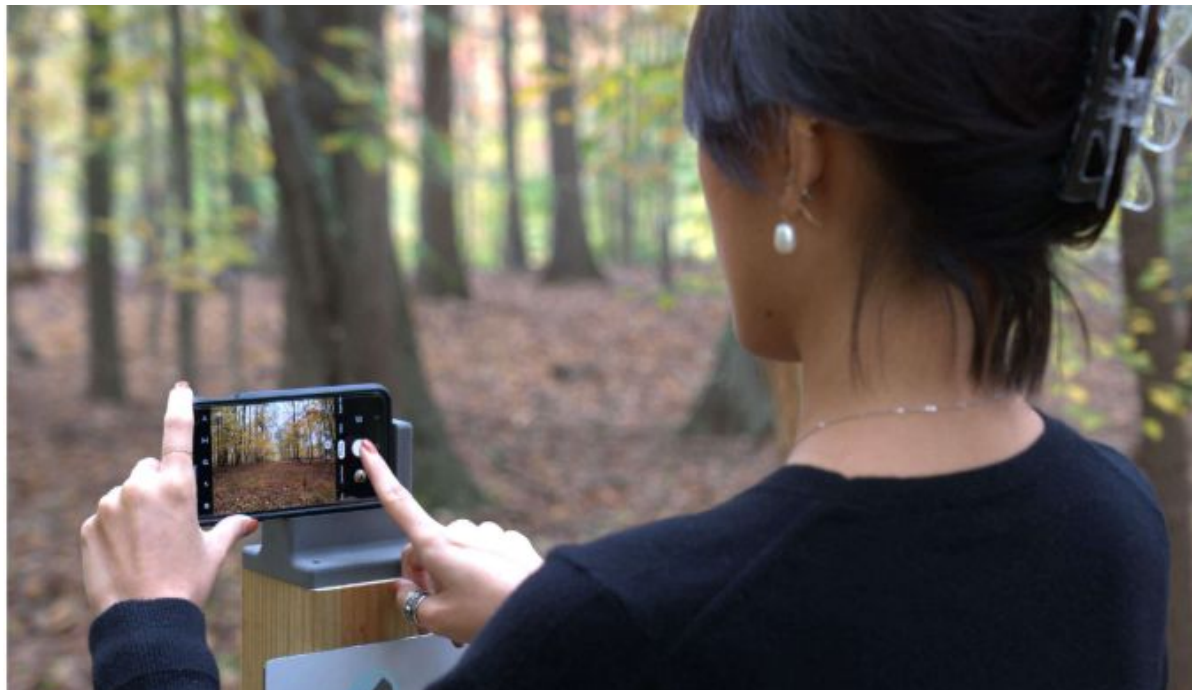
Visit our website at [www.thewatershedproject.org](http://www.thewatershedproject.org) to learn more. For inquiries or concerns, please contact [Natalie@TheWatershedProject.org](mailto:Natalie@TheWatershedProject.org)

[Natalie@TheWatershedProject.org](mailto:Natalie@TheWatershedProject.org) [www.thewatershedproject.org](http://www.thewatershedproject.org)



# Community Science – Creek Water Level Monitoring

In preparation for fish habitat restoration





Green Collar Corps (Interns)



Creek Restoration (with Urban Tilth)



Creek Water Quality Monitoring  
with Trout Unlimited



## Support our ongoing programming in Wildcat Creek and the Fish Passage



Creek Cleanup (with SOS Richmond)



# Continue to work to build Community Amenities



**Thank you !**





**WILDCAT CREEK FISH PASSAGE**  
**COMMUNITY BENEFIT PLAN 50% DESIGN**  
 NOVEMBER 2022

# WILDCAT CREEK FISH PASSAGE

Funding for this project has been provided in full or in part from the California Ocean, Water, Parks, Climate, Coastal Protection, and Outdoor Services for 60 days of 2019 Proposition 68 and through an agreement with the State Department of Water Resources.

## FINAL COMMUNITY BENEFITS PLAN

**SEATING  
AREA**

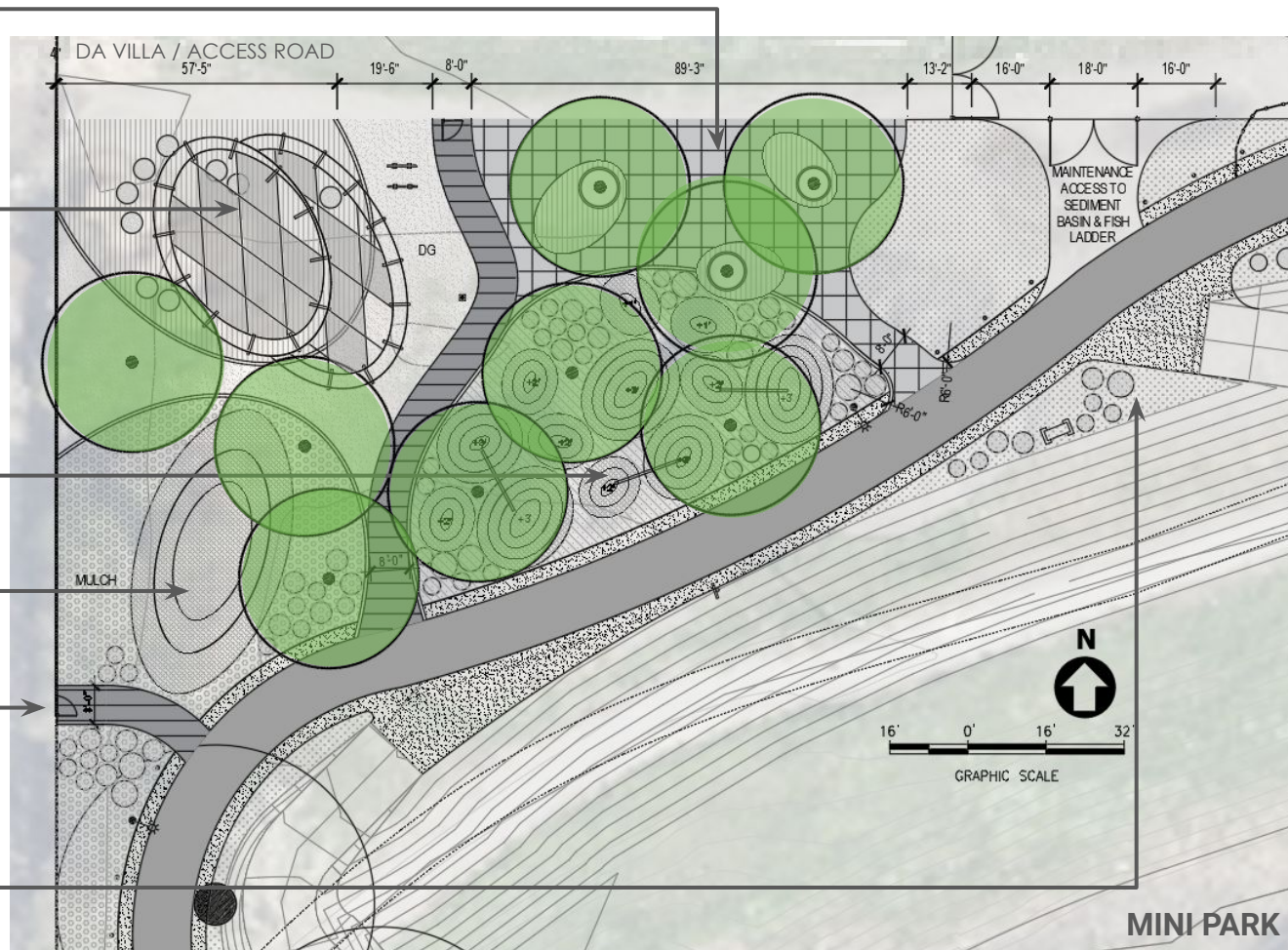
**GATHERING  
+ SHADE  
STRUCTURE**

**PLAY  
MOUNDS**

**BIORETENTION**

**CONNECTION  
TO SCHOOL**

**INTERPRETIVE  
AREA**





**RAIN GARDEN**

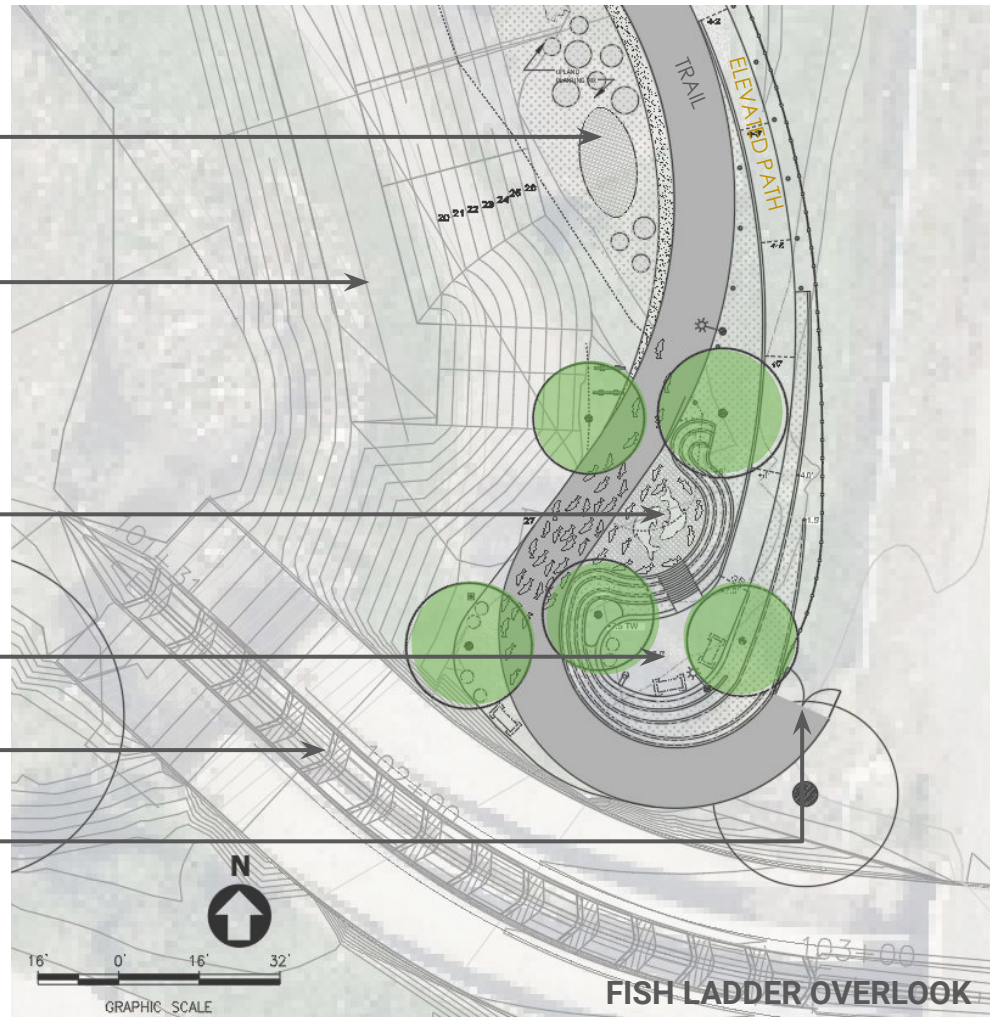
**MAINTENANCE  
ACCESS**

**PLAY AREA  
+ SEATING**

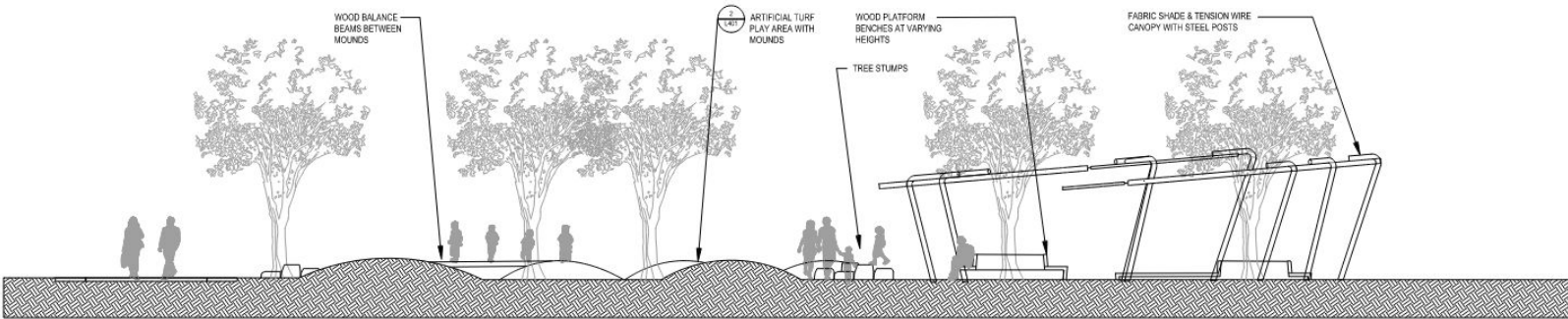
**OVERLOOK**

**FISH LADDER**

**MAINTENANCE  
TURNAROUND +  
GATE**

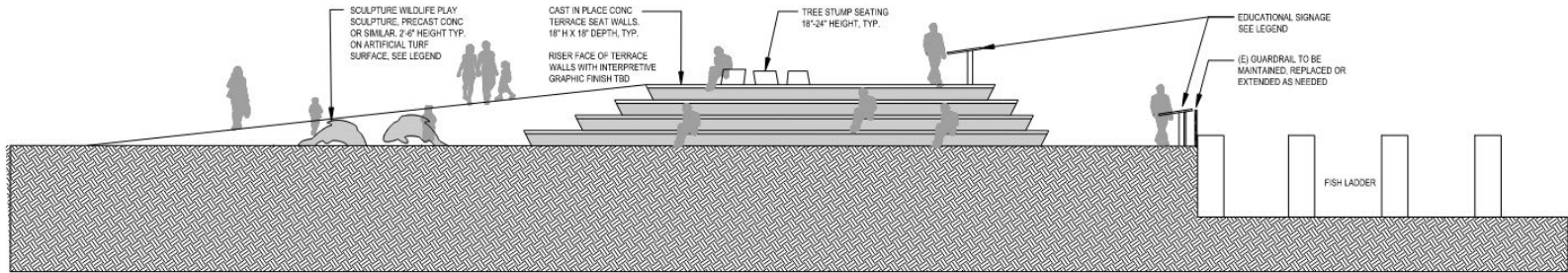


# SECTION VIEWS: AMENITIES ACROSS TRAIL



VERDE MINI PARK SECTION

1/8"=1'-0"

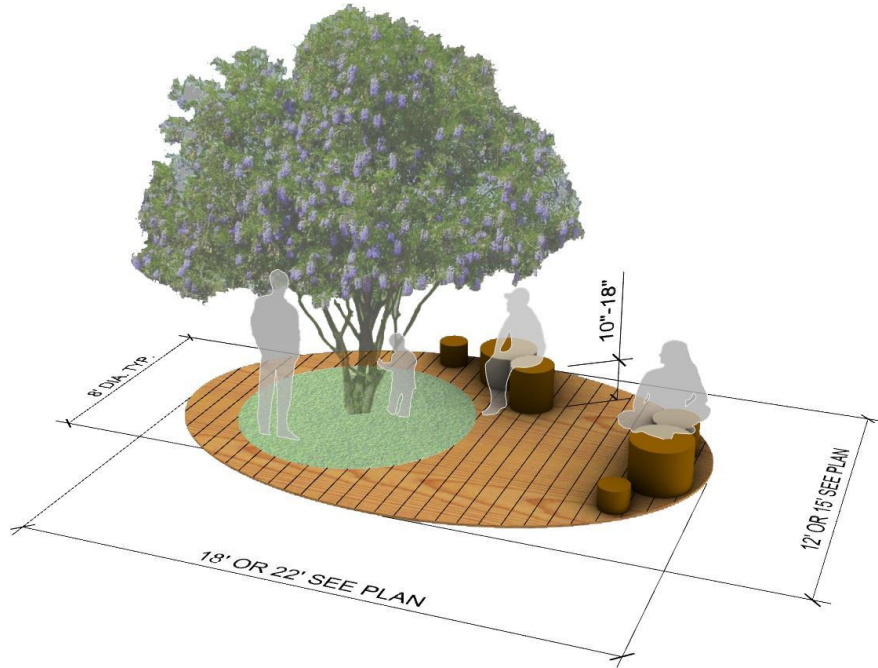


FISH PASSAGE OVERLOOK SECTION

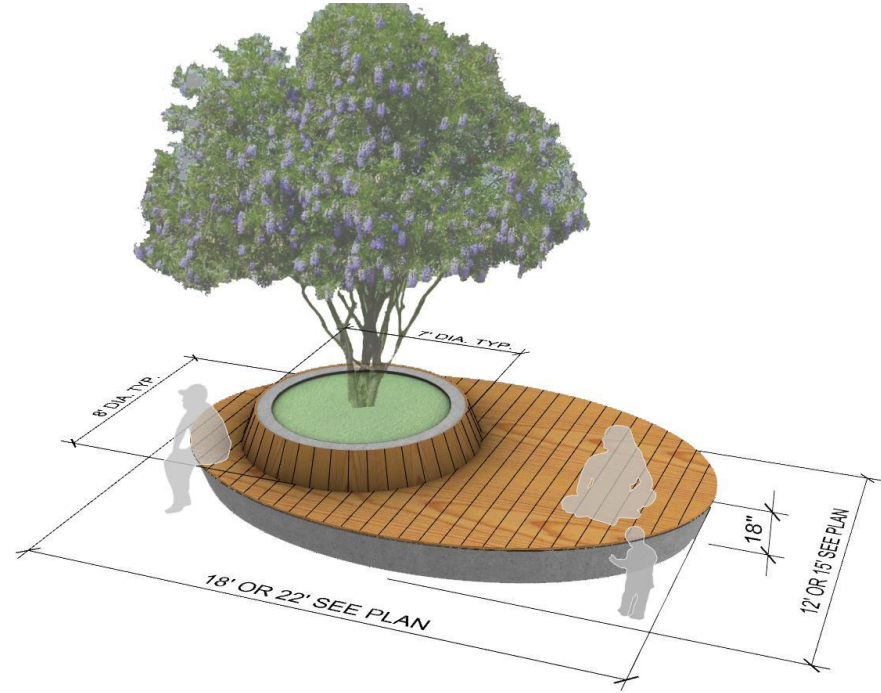
1/8"=1'-0"



# DESIGN DEVELOPMENT: SEATING

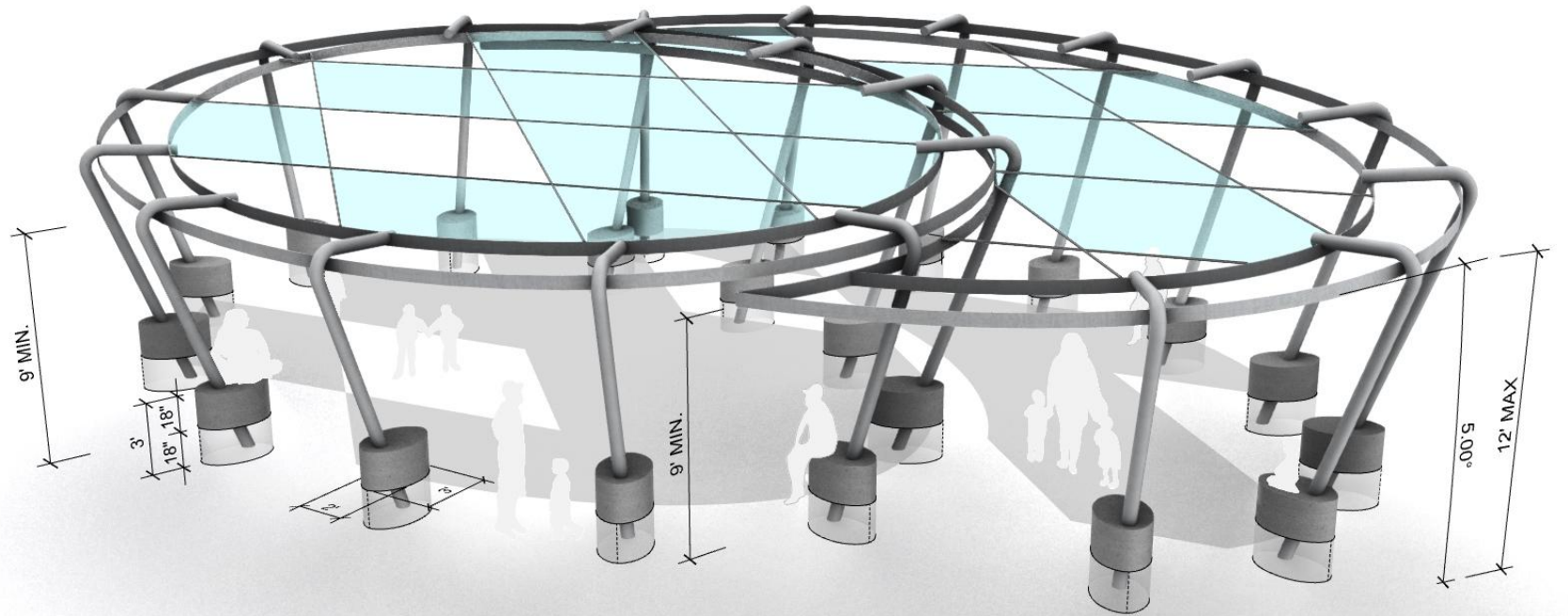


**FLUSH SEATING**  
(ground level)



**RAISED SEATING**  
(18" height)

# DESIGN DEVELOPMENT: SHADE STRUCTURE



## SHADE STRUCTURE:

Raised above-ground footing reduces cost, and adds seating



# LIGHTING ALONG PATHWAY

Urban and habitat-friendly, Dark Sky compliant

